

Wyoming

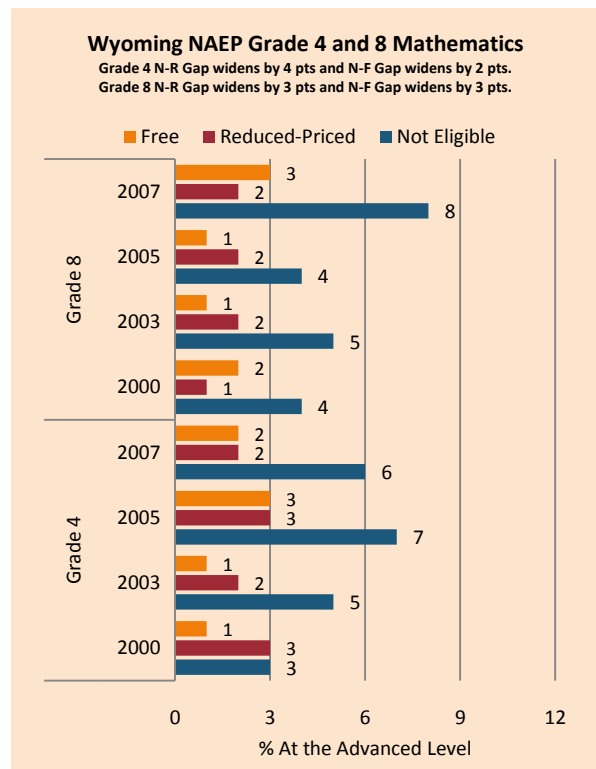
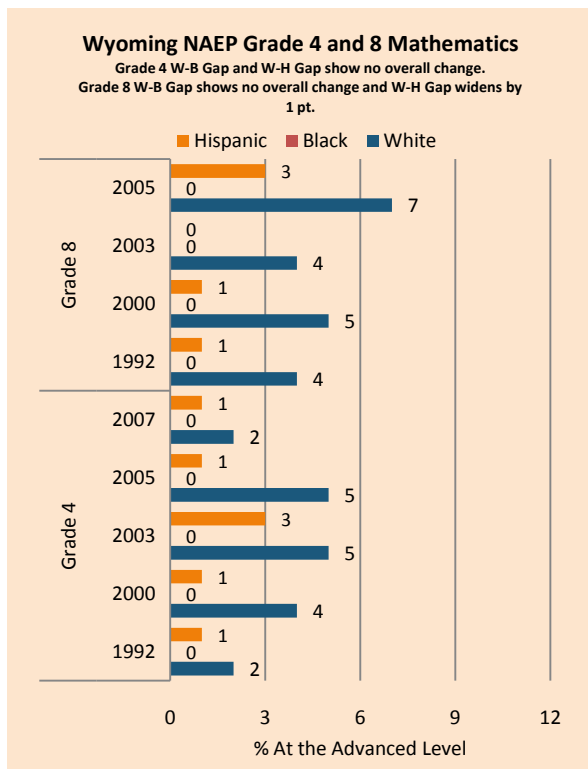
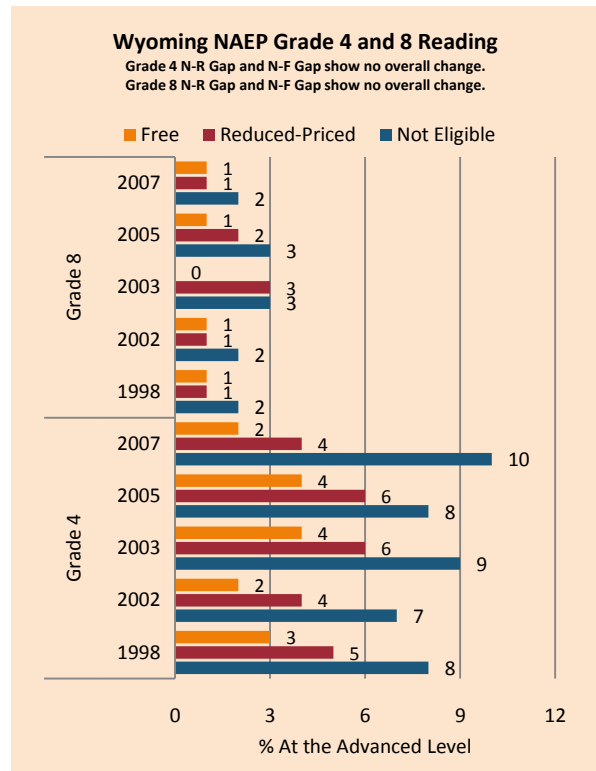
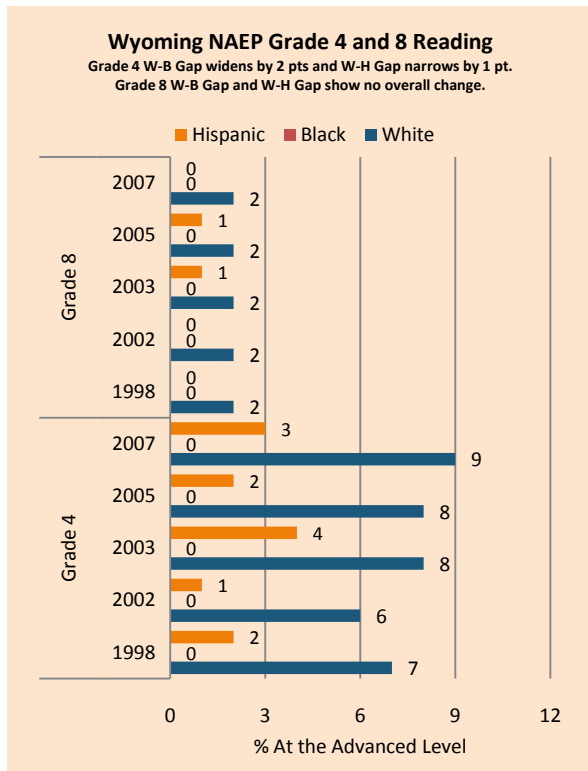
NAEP proficiency level and percentile data demonstrate the existence of substantial Excellence Gaps for Hispanic and Free and Reduced Lunch Eligible students. White students had higher average AP scores than African-American and Hispanic students on AP tests and were more likely to make a “5” on an AP exam or take an AP exam.

According to NAEP proficiency data, the percentage of students at the advanced level increased in Math for non-FARM and white students and in Math Grade 8 for FARM and Hispanic students, with non-FARM students also gaining in Reading Grade 4. Hispanic students’ achievement declined in Reading. The achievement gap increased in Grade 4 (both subjects), for FARM students in Math Grade 8 and for Hispanics students in Reading Grade 8. A narrowing of the Excellence Gap in Reading Grade 8 was due to weaker scores by non-FARM students.

NAEP scale scores at the 90th percentile increased across subgroups in Math, with a narrowing of the achievement gap for Hispanic and FARM students. Small improvements among non-FARM and white students and declines among Hispanic and FARM students led to increases in achievement gaps in Reading Grade 4. In Reading Grade 8 all but FARM students witnessed lower scores, with achievement gaps widening for Hispanic students and narrowing for FARM students.

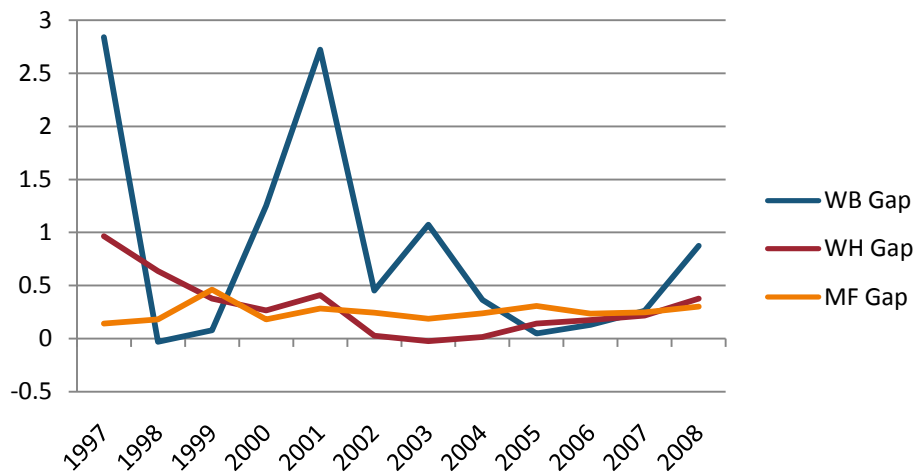
On the AP exams, the achievement gap increased as measured by the percentage of 5’s (weighted) and the number of tests taken but declined in mean AP scores. The gap widened for Hispanic students but declined for African-American students in the percentage of tests taken that scored a 5 (unweighted).

Summary of State Policy as of 2006-2007							
State	Mandate Identify	Mandate Services	Gifted Identified	Identified by Gender	Identified by Ethnicity	GT Funding	GT Funding per Identified
Wyoming	no	no	Not collected	yes	no	N/A	N/A



NAEP Scores at the 90 th Percentile				
Subject, Grade, Group	2003	2007	2003 Gap	2007 Gap
Math 4 Male	273	275	4	3
Math 4 Female	268	272		
Math 8 Male	324	327	5	1
Math 8 Female	319	326		
Reading 4 Male	260	262	6	4
Reading 4 Female	267	266		
Reading 8 Male	300	298	9	8
Reading 8 Female	309	306		
Math 4 ELL	249	258	22	16
Math 4 NonELL	271	274		
Math 8 ELL	293		29	
Math 8 NonELL	322	327		
Reading 4 ELL	238	243	26	21
Reading 4 NonELL	264	264		
Reading 8 ELL	265		40	
Reading 8 NonELL	305	302		
Math 4 FARM	262	267	11	9
Math 4 NonFARM	273	276		
Math 8 FARM	309	317	16	13
Math 8 NonFARM	325	329		
Reading 4 FARM	256	252	11	16
Reading 4 NonFARM	267	268		
Reading 8 FARM	295	296	13	8
Reading 8 NonFARM	307	304		
Math 4 White	275	280		
Math 4 Black	245	249	29	31
Math 4 Hispanic	253	264	22	16
Math 8 White	323	328		
Math 8 Black				
Math 8 Hispanic	303	313	20	15
Reading 4 White	265	265		
Reading 4 Black				
Reading 4 Hispanic	253	250	12	15
Reading 8 White	306	303		
Reading 8 Black				
Reading 8 Hispanic	294	286	12	17

Gaps in Mean AP Scores



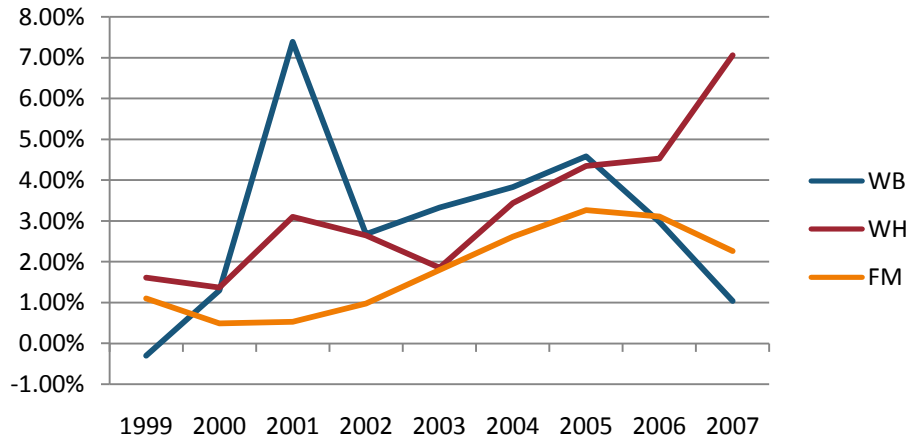
Gaps in the Percentage of Tests Taken Receiving a "5" on the AP Exam by Subgroup*

	1997	1998	1999	2000	2001	2002	2003	2004	2005	2006	2007	2008
Male	9.29%	14.15%	12.82%	11.76%	12.64%	8.28%	9.76%	12.67%	6.41%	9.31%	12.59%	9.56%
Female	6.86%	7.55%	5.25%	7.65%	5.03%	3.28%	5.45%	6.51%	3.50%	6.45%	5.78%	5.54%
White	7.71%	9.70%	9.03%	9.30%	8.83%	5.75%	7.57%	9.58%	4.73%	7.80%	8.72%	7.76%
Black	0.00%	0.00%	0.00%	0.00%	0.00%	0.00%	0.00%	0.00%	11.11%	8.33%	5.56%	0.00%
Hispanic	0.00%	0.00%	0.00%	13.79%	0.00%	2.13%	10.34%	7.50%	3.92%	5.26%	10.91%	6.06%
M-F Gap	2.43%	6.60%	7.57%	4.11%	7.61%	5.00%	4.31%	6.17%	2.91%	2.86%	6.81%	4.03%
W-B Gap		9.70%	9.03%	9.30%		5.75%	7.57%	9.58%	-6.38%	-0.54%	3.17%	7.76%
W-H Gap	7.71%	9.70%	9.03%	-4.50%	8.83%	3.62%	-2.78%	2.08%	0.80%	2.53%	-2.18%	1.70%

Gaps in the Percentage of Tests Taken Receiving a "5" on the AP Exam by Subgroup Weighted by Enrollment*

	1999	2000	2001	2002	2003	2004	2005	2006	2007
Male	0.54%	0.60%	0.95%	0.69%	0.87%	0.97%	0.58%	0.95%	1.59%
Female	0.28%	0.43%	0.40%	0.31%	0.58%	0.67%	0.43%	0.86%	0.86%
White	0.39%	0.47%	0.65%	0.50%	0.73%	0.81%	0.49%	0.87%	1.17%
Black	0.00%	0.00%	0.00%	0.00%	0.00%	0.00%	0.65%	0.68%	0.68%
Hispanic	0.00%	0.51%	0.00%	0.13%	0.80%	0.38%	0.24%	0.35%	0.69%
M-F Gap	0.26%	0.17%	0.54%	0.39%	0.29%	0.30%	0.15%	0.09%	0.73%
W-B Gap	0.39%	0.47%	0.65%	0.50%	0.73%	0.81%	-0.16%	0.19%	0.48%
W-H Gap	0.39%	-0.04%	0.65%	0.37%	-0.07%	0.43%	0.25%	0.52%	0.48%

Gaps in the Number of Tests Taken Weighted by Subgroup Enrollment*



*The unit of analysis for AP data is the test, not the student. AP test results are presented as the number of scores received by members of each subgroup, NOT the number of students who received a given score on any exam. These numbers are not equivalent because some students take multiple tests.