

Wisconsin

NAEP proficiency level and percentile data as well as results from state assessments demonstrate the existence of substantial Excellence Gaps for African-American, Hispanic, and Free and Reduced Lunch Eligible students. White students had higher average AP scores than African-American and Hispanic students on AP tests and were more likely to make a “5” on an AP exam or take an AP exam. Wisconsin state assessments have a much lower threshold for achieving excellence than most other states or the NAEP.

According to NAEP proficiency data, the percentage of students at the advanced level increased for non-FARM and African-American students in Math and in Reading Grade 8, along with FARM students in Math Grade 4, African-American students in Reading Grade 8, and Hispanic students in Math Grade 8. Performance declined among Hispanic students in Reading and white students in Reading Grade 8. The Excellence Gap increased in Math and Reading Grade 4, with a decline in the gap between white and African-American students in Reading Grade 8.

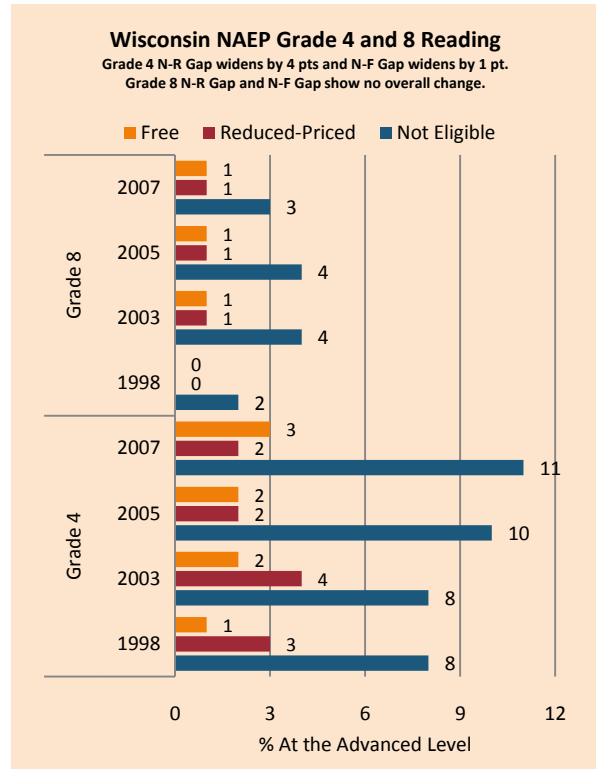
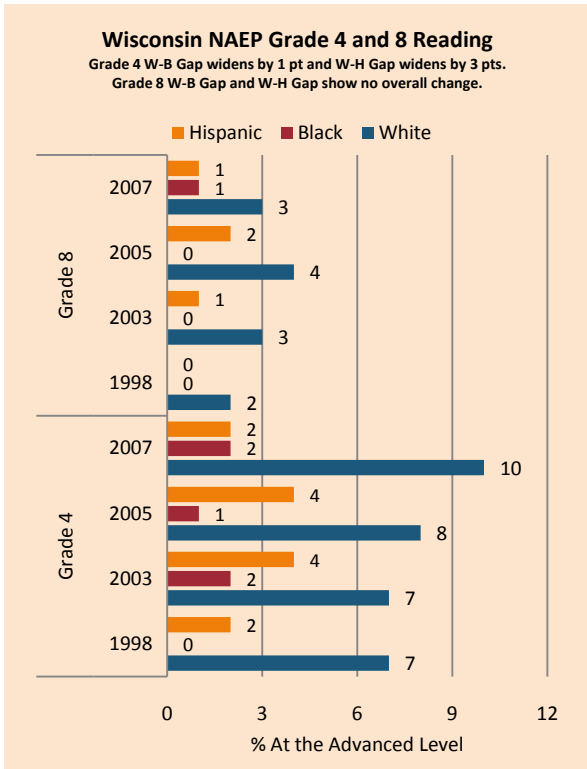
NAEP scale scores at the 90th percentile increased for most subgroups in Math (both grades), for FARM, non-FARM, and white students in Reading Grade 4, and African-American students in Reading Grade 8. Scores were generally lower in Reading Grade 8 and for Hispanic students across assessments. The Excellence Gap widened in Reading Grade 4 as well as for Hispanic students in Math Grade 8 and FARM students in Reading Grade 8. Achievement gaps narrowed for African-American students in Math Grade 4, minority students in Reading Grade 8, and FARM students in Math Grade 8.

The percentage of students achieving advanced status on state assessments increased across income and ethnic subgroups, grade levels, and subjects for all but Grade 10 Reading (where there were general declines in performance) and Grade 10 Math for white students. There was an increase in the Excellence Gap in Math and Reading in Grade 4 and in Grade 7 Math. African-American and Hispanic students improved more rapidly than white students in Reading in Grade 7 and also narrowed the gap in Grade 10.

On the AP exams, there were increases in achievement gaps as measured by the percentage of tests scoring a 5 (weighted) and the number of tests taken. The gap for Hispanic students declined but increased for African-American students in the percentage of tests scoring a 5 (unweighted), while the gap widened for Hispanic students in mean AP scores.

Summary of State Policy as of 2006-2007

State	Mandate Identify	Mandate Services	Gifted Identified	Identified by Gender	Identified by Ethnicity	GT Funding	GT Funding per Identified
Wisconsin	yes	yes	Not	no	no	\$282,000	N/A

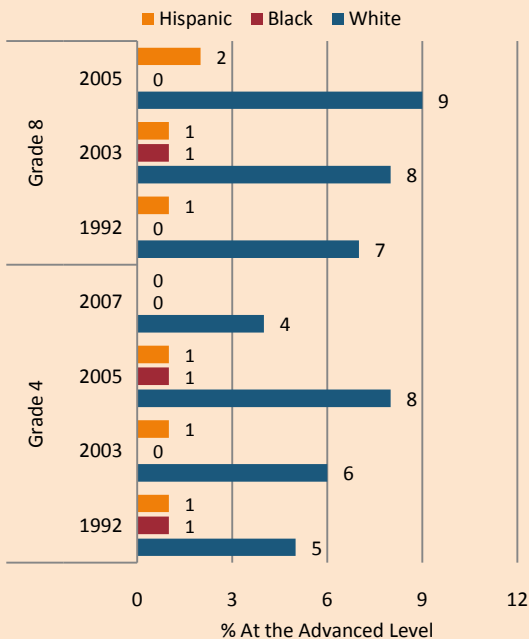


collected

NAEP Scores at the 90 th Percentile				
Subject, Grade, Group	2003	2007	2003 Gap	2007 Gap
Math 4 Male	273	279	4	3
Math 4 Female	270	276		
Math 8 Male	328	332	3	7
Math 8 Female	325	325		
Reading 4 Male	258	264	8	2
Reading 4 Female	266	265		
Reading 8 Male	301	298	11	11
Reading 8 Female	312	310		
Math 4 ELL	247	262	25	16
Math 4 NonELL	272	278		
Math 8 ELL		301		28
Math 8 NonELL	327	330		
Reading 4 ELL	238	239	25	27
Reading 4 NonELL	263	265		
Reading 8 ELL		283		22
Reading 8 NonELL	307	306		
Math 4 FARM	257	263	18	18
Math 4 NonFARM	275	281		
Math 8 FARM	302	310	28	23

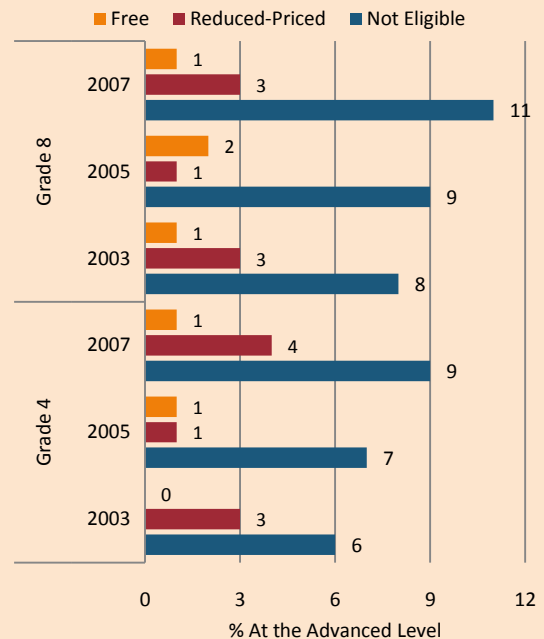
Wisconsin NAEP Grade 4 and 8 Mathematics

Grade 4 W-B Gap and W-H Gap show no overall change.
Grade 8 W-B Gap widens by 2 pts and W-H Gap widens by 1 pt.



Wisconsin NAEP Grade 4 and 8 Mathematics

Grade 4 N-R Gap widens by 2 pts and N-F Gap widens by 2 pts.
Grade 8 N-R Gap widens by 3 pts and N-F Gap widens by 3 pts.



Math 8 NonFARM	330	334		
Reading 4 FARM	248	249	18	21
Reading 4 NonFARM	266	269		
Reading 8 FARM	291	289	18	19
Reading 8 NonFARM	309	309		
Math 4 White	262	269		
Math 4 Black	252	260	11	9
Math 4 Hispanic				
Math 8 White	328	332		
Math 8 Black	283	287	45	46
Math 8 Hispanic	310	309	19	23
Reading 4 White	264	267		
Reading 4 Black	243	240	21	28
Reading 4 Hispanic	257	248	8	19
Reading 8 White	309	307		
Reading 8 Black	276	278	33	29
Reading 8 Hispanic	292	291	17	16

WI Knowledge and Concepts Examination Grade 4, 7, 10 English/Language Arts Excellence Achievement Gaps on Race															
% At the Advanced Level	Grade 4					Grade 7					Grade 10				
	W	B	H	W-B	W-H	W	B	H	W-B	W-H	W	B	H	W-B	W-H
2002	47	17	19	30	28	Data is not available.					58	19	27	39	31
2003	50	19	22	31	28	Data is not available.					56	16	26	40	30
2004	48	17	19	31	29	Data is not available.					61	22	31	39	30
2005	49	15	19	34	30	49	13	20	36	29	48	12	19	36	29
2006	48	16	19	32	29	52	14	21	38	31	49	12	19	37	30
2007	49	16	20	33	29	53	17	22	36	31	48	11	18	37	30
2008	50	16	20	34	30	53	19	25	34	28	49	14	22	35	27

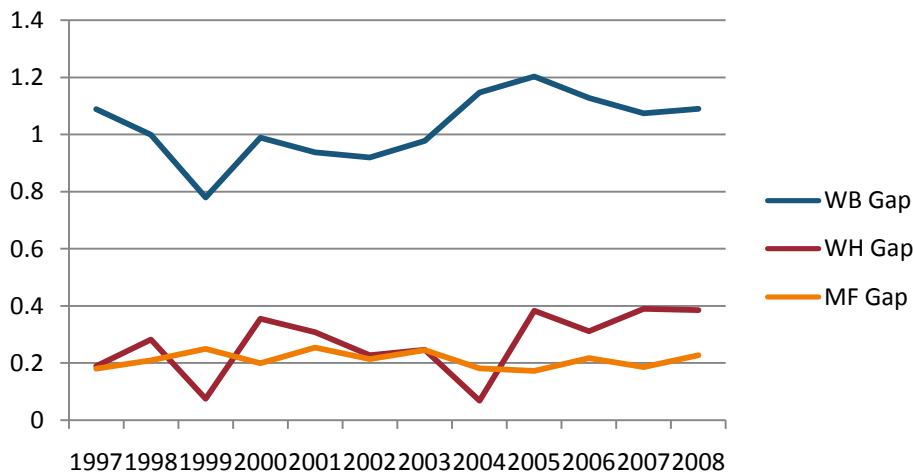
WI Knowledge and Concepts Examination Grade 4, 7, 10 Mathematics Excellence Achievement Gaps on Race															
% At the Advanced Level	Grade 4					Grade 7					Grade 10				
	W	B	H	W-B	W-H	W	B	H	W-B	W-H	W	B	H	W-B	W-H
2002	34	10	13	24	21	Data is not available.					27	2	6	25	21
2003	34	9	14	25	20	Data is not available.					29	3	7	26	22

2004	37	9	13	28	24						29	4	7	25	22
2005	38	9	14	29	24	32	5	11	27	21	30	4	7	26	23
2006	41	11	16	30	25	38	7	13	31	25	30	4	8	26	22
2007	40	13	18	27	22	37	7	12	30	25	28	3	6	25	22
2008	44	14	21	30	23	39	8	15	31	24	25	3	7	22	18

WI Knowledge and Concepts Examination Grade 4, 8, 10 English/Language Arts Excellence Achievement Gaps on SES										
% At the Advanced Level	Grade 4			Grade 7			Grade 10			
	N	P	Gap	N	P	Gap	N	P	Gap	
2002	49	22	27	Data is not available.			57	30	27	
2003	53	25	28	Data is not available.			56	27	29	
2004	52	22	30	Data is not available.			62	33	29	
2005	52	22	30	52	22	30	49	21	28	
2006	52	22	30	55	23	32	50	20	30	
2007	52	23	29	56	24	32	49	20	29	
2008	54	24	30	57	27	30	51	22	29	

WI Knowledge and Concepts Examination Grade 4, 7, 10 Mathematics Excellence Achievement Gaps on SES										
% At the Advanced Level	Grade 4			Grade 7			Grade 10			
	N	P	Gap	N	P	Gap	N	P	Gap	
2002	37	14	23	Data is not available.			27	8	19	
2003	36	15	21	Data is not available.			29	9	20	
2004	39	15	24	Data is not available.			30	9	21	
2005	40	16	24	35	12	23	31	9	22	
2006	44	18	26	41	15	26	31	9	22	
2007	43	19	24	40	14	26	29	8	21	
2008	48	22	26	42	16	26	29	8	21	

Gaps in Mean AP Scores



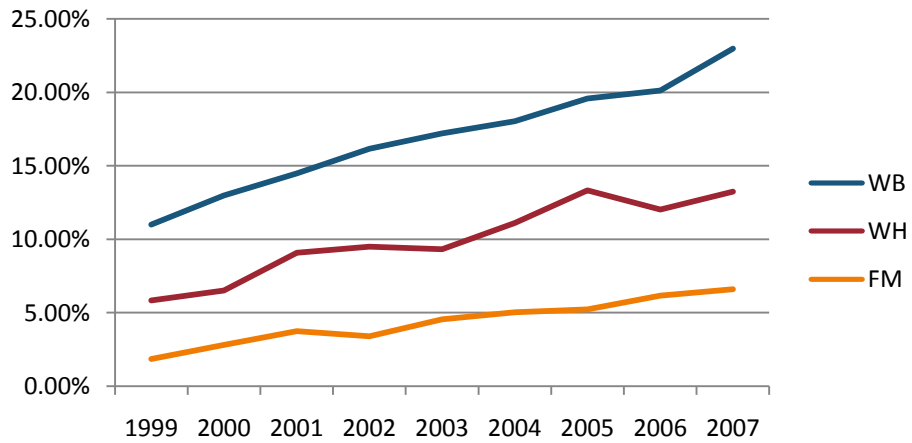
Gaps in the Percentage of Tests Taken Receiving a "5" on the AP Exam by Subgroup*

	1997	1998	1999	2000	2001	2002	2003	2004	2005	2006	2007	2008
Male	15.38%	15.56%	17.85%	17.37%	17.23%	18.25%	17.99%	18.27%	16.95%	17.90%	17.58%	17.91%
Female	11.30%	10.66%	11.80%	11.86%	10.70%	12.48%	12.12%	13.64%	13.12%	13.07%	12.75%	13.37%
White	12.70%	12.54%	14.28%	14.36%	13.50%	14.79%	14.65%	15.43%	14.89%	15.19%	14.99%	15.35%
Black	4.09%	2.14%	6.90%	2.17%	2.91%	5.21%	4.82%	5.53%	3.97%	4.10%	3.49%	4.02%
Hispanic	20.18%	15.12%	19.24%	14.13%	15.86%	14.29%	16.22%	19.18%	10.89%	14.06%	12.68%	12.56%
M-F Gap	4.08%	4.90%	6.05%	5.51%	6.53%	5.77%	5.87%	4.64%	3.83%	4.83%	4.83%	4.54%
W-B Gap	8.61%	10.40%	7.38%	12.20%	10.59%	9.58%	9.83%	9.89%	10.92%	11.08%	11.50%	11.33%
W-H Gap	-7.49%	-2.58%	-4.97%	0.23%	-2.36%	0.50%	-1.57%	-3.76%	4.00%	1.13%	2.31%	2.79%

Gaps in the Percentage of Tests Taken Receiving a "5" on the AP Exam by Subgroup Weighted by Enrollment*

	1999	2000	2001	2002	2003	2004	2005	2006	2007
Male	2.45%	2.63%	2.76%	3.15%	3.28%	3.64%	3.65%	4.14%	4.28%
Female	1.84%	2.13%	2.12%	2.58%	2.77%	3.41%	3.51%	3.83%	3.95%
White	2.05%	2.42%	2.49%	2.90%	3.12%	3.60%	3.75%	4.09%	4.38%
Black	0.23%	0.08%	0.12%	0.18%	0.20%	0.29%	0.22%	0.28%	0.22%
Hispanic	1.63%	1.46%	1.49%	1.45%	1.94%	2.34%	1.29%	2.10%	2.02%
M-F Gap	0.61%	0.50%	0.64%	0.57%	0.52%	0.24%	0.14%	0.31%	0.33%
W-B Gap	1.82%	2.34%	2.38%	2.72%	2.92%	3.31%	3.53%	3.81%	4.16%
W-H Gap	0.41%	0.96%	1.00%	1.45%	1.18%	1.25%	2.46%	1.99%	2.35%

Gaps in the Number of Tests Taken Weighted by Subgroup Enrollment*



*The unit of analysis for AP data is the test, not the student. AP test results are presented as the number of scores received by members of each subgroup, NOT the number of students who received a given score on any exam. These numbers are not equivalent because some students take multiple tests.