

West Virginia

NAEP proficiency level and percentile data demonstrate the existence of substantial Excellence Gaps for African-American and Free and Reduced Lunch Eligible students, while results from state assessments suggest gaps for Hispanic students as well. White students had higher average AP scores than African-American and Hispanic students on AP tests and were more likely to make a “5” on an AP exam or take an AP exam. West Virginia state assessments have fairly rigorous standards for advanced status.

According to NAEP proficiency data, the percentage of students at the advanced level increased for non-FARM, white, and African-American students in Math Grade 4, non-FARM students in Math Grade 8, and for African-American students in Reading Grade 4. There were declines in performance among white and non-FARM students in Reading and for FARM students in Reading Grade 8. Non-FARM expanded the Excellence Gap in Math. The achievement gap declined in Reading Grade 4 and for African-American students in Reading Grade due to weak white and non-FARM students’ performance.

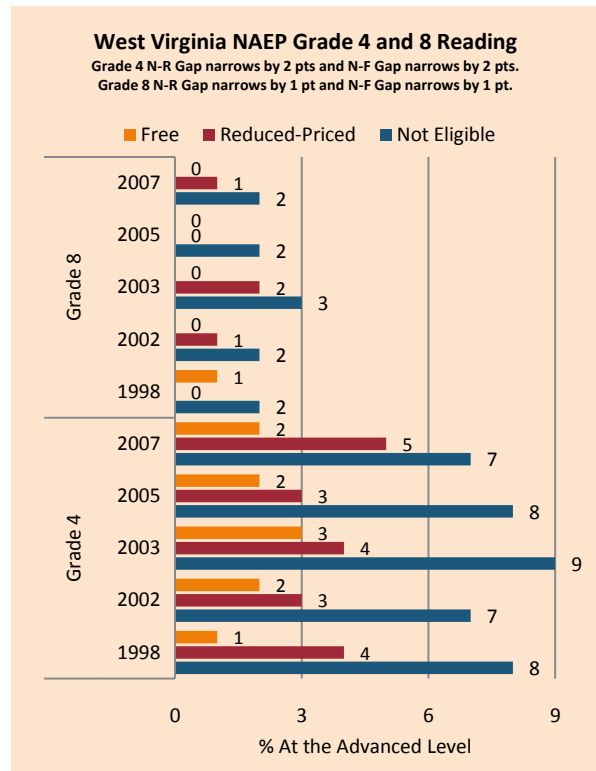
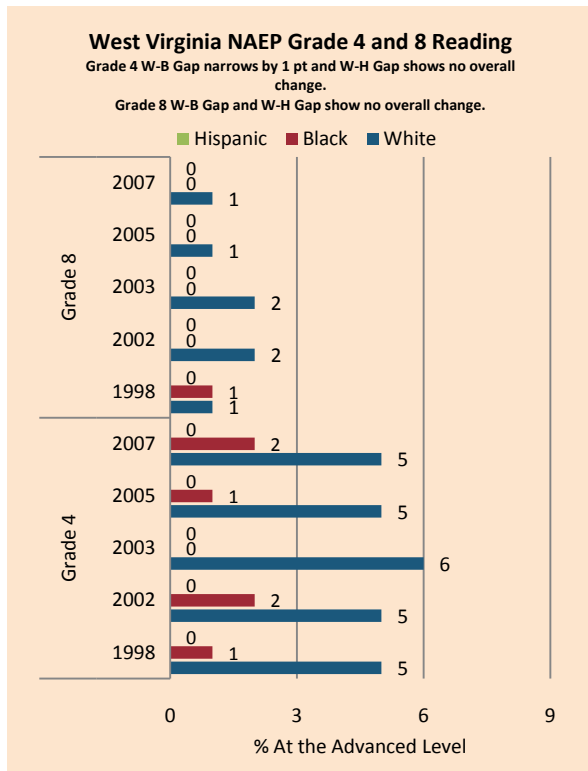
NAEP scale scores at the 90th percentile increased for most groups in Math Grade 4 but were generally flat or declining on other assessments. Achievement gaps widened in Math Grade 4 and for African-American students in Math Grade 8.

There was little change in the proportion of students performing at the advanced level on state assessments or change in achievement gaps across Grade levels and income and ethnic subgroups. There was a decline in Hispanic performance in Grade 10 Reading and Grade 4 Math, while African American, white, low-income, and more affluent students posted gains in Grade 4 Math (where African American students improved more rapidly than whites). There was also an increase in performance across income groups in Grade 7 Math.

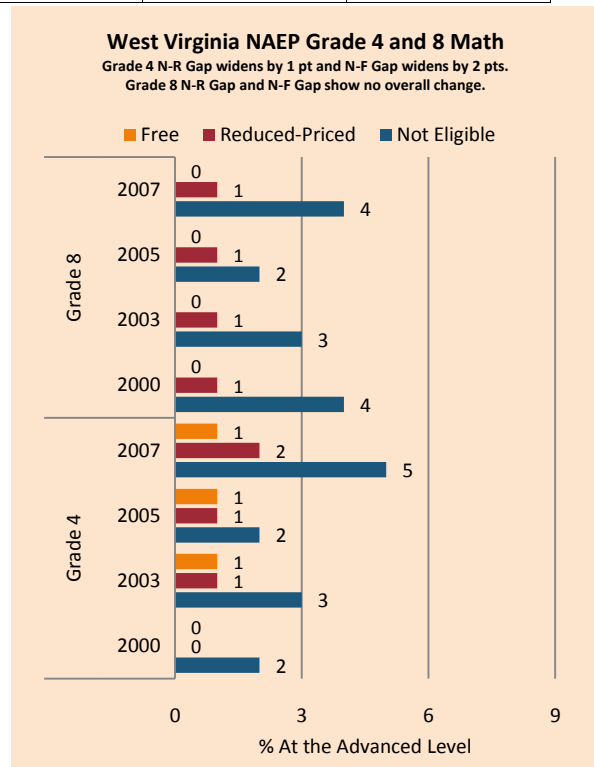
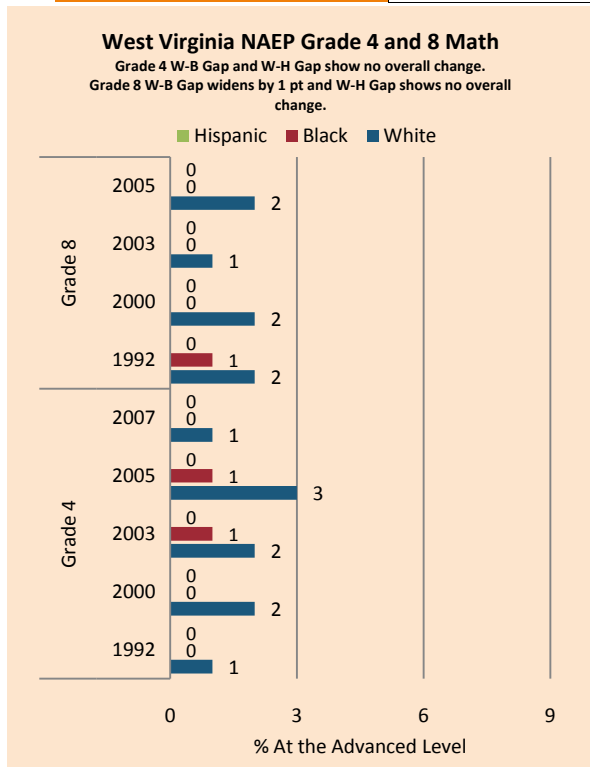
On the AP exams, achievement gaps widened as measured by the percentage of tests receiving a 5 (unweighted) and the number of tests taken, as well as for Hispanic students in the percentage of 5’s (weighted). There was a modest decline in the gap between white and African-American students in mean AP scores.

Summary of State Policy as of 2006-2007

State	Mandate Identify	Mandate Services	Gifted Identified	Identified by Gender	Identified by Ethnicity	GT Funding	GT Funding per Identified
West Virginia	no	yes	4,988	no	no	\$0	\$0



NAEP Scores at the 90 th Percentile				
Subject, Grade, Group	2003	2007	2003 Gap	2007 Gap
Math 4 Male	264	270	5	3
Math 4 Female	260	266		
Math 8 Male	313	315	4	9
Math 8 Female	309	306		
Reading 4 Male	256	255	6	6
Reading 4 Female	262	261		
Reading 8 Male	293	291	10	9
Reading 8 Female	303	300		
Math 4 ELL				
Math 4 NonELL	262	268		
Math 8 ELL				
Math 8 NonELL	311	311		
Reading 4 ELL				
Reading 4 NonELL	259	258		
Reading 8 ELL				
Reading 8 NonELL	298	295		
Math 4 FARM	256	261	11	13
Math 4 NonFARM	268	273		
Math 8 FARM	299	300	18	18



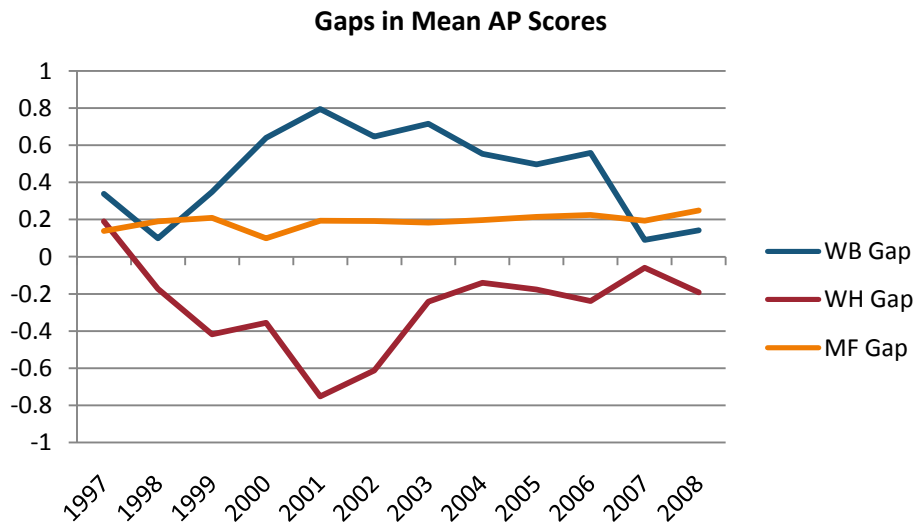
Math 8 NonFARM	318	318		
Reading 4 FARM	251	250	14	14
Reading 4 NonFARM	266	264		
Reading 8 FARM	291	287	14	14
Reading 8 NonFARM	305	301		
Math 4 White	274	279		
Math 4 Black	258	259	16	20
Math 4 Hispanic	258	257	16	22
Math 8 White	312	311		
Math 8 Black	288	284	24	28
Math 8 Hispanic				
Reading 4 White	260	259		
Reading 4 Black	243	243	17	16
Reading 4 Hispanic				
Reading 8 White	299	296		
Reading 8 Black	285	282	14	13
Reading 8 Hispanic				

WV Educational Standards Test Grade 4, 7, 10 English/Language Arts Excellence Achievement Gaps on Race															
% At the Advanced Level	Grade 4					Grade 7					Grade 10				
	W	B	H	W-B	W-H	W	B	H	W-B	W-H	W	B	H	W-B	W-H
2004	6	2	5	4	1	9	3	7	6	2	12	4	11	8	1
2005	7	3	2	4	5	8	3	5	5	3	11	4	15	7	-4
2006	7	2	5	5	2	9	3	6	6	3	11	4	5	7	6
2007	7	3	5	4	2	9	3	4	6	5	11	4	7	7	4
2008	7	2	3	5	4	9	4	6	5	3	11	4	6	7	5

WV Educational Standards Test Grade 4, 7, 10 Mathematics Excellence Achievement Gaps on Race															
% At the Advanced Level	Grade 4					Grade 7					Grade 10				
	W	B	H	W-B	W-H	W	B	H	W-B	W-H	W	B	H	W-B	W-H
2004	7	2	6	5	1	4	1	4	3	0	6	1	3	5	3
2005	10	6	8	4	2	5	2	4	3	1	7	2	11	5	-4
2006	12	6	6	6	6	5	1	6	4	-1	6	2	6	4	0
2007	14	8	8	6	6	6	1	4	5	2	6	2	7	4	-1
2008	11	8	3	3	8	6	2	5	4	1	6	2	4	4	2

WV Educational Standards Test Grade 4, 7, 10 Reading Excellence Achievement Gaps on SES									
% At the Advanced Level	Grade 4			Grade 7			Grade 10		
	N	P	Gap	N	P	Gap	N	P	Gap
2004	9	3	6	13	4	9	16	5	11
2005	11	4	7	12	4	8	15	5	10
2006	11	4	7	13	4	9	14	5	9
2007	11	4	7	13	4	9	15	5	10
2008	10	3	7	13	4	9	14	5	9

WV Educational Standards Test Grade 4, 7, 10 Mathematics Excellence Achievement Gaps on SES									
% At the Advanced Level	Grade 4			Grade 7			Grade 10		
	N	P	Gap	N	P	Gap	N	P	Gap
2004	11	3	8	6	1	5	9	2	7
2005	16	6	10	7	2	5	10	3	7
2006	17	7	10	9	2	7	9	3	6
2007	19	9	10	9	2	7	9	3	6
2008	17	7	10	9	3	6	9	3	6

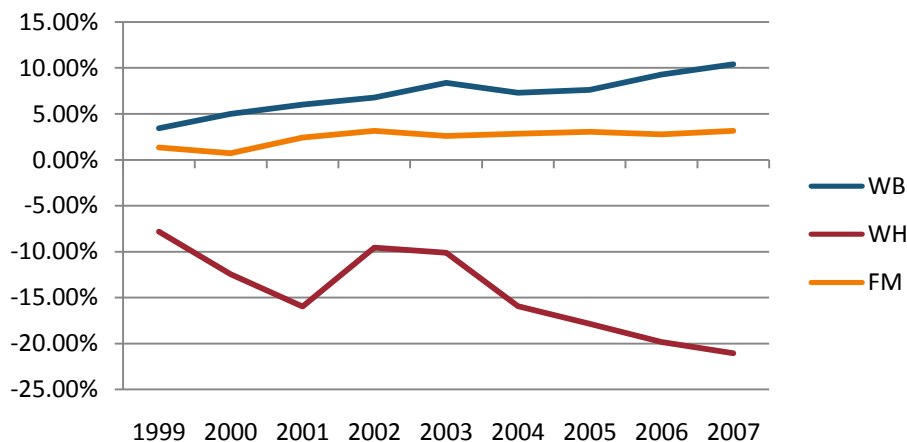


Gaps in the Percentage of Tests Taken Receiving a "5" on the AP Exam by Subgroup*

	1997	1998	1999	2000	2001	2002	2003	2004	2005	2006	2007	2008
Male	10.83%	12.49%	12.60%	10.17%	10.97%	9.27%	9.21%	11.90%	10.13%	10.11%	11.02%	8.78%
Female	6.96%	4.91%	7.03%	7.59%	5.70%	5.27%	5.09%	7.04%	5.73%	5.05%	6.19%	5.24%
White	8.12%	7.93%	8.91%	7.31%	6.97%	6.10%	6.29%	8.37%	6.63%	6.75%	7.60%	5.85%
Black	4.55%	7.69%	7.27%	2.04%	0.00%	0.00%	1.92%	1.59%	0.00%	1.47%	9.33%	10.68%
Hispanic	5.26%	10.71%	8.33%	21.43%	17.86%	18.75%	15.15%	13.33%	6.78%	5.19%	8.43%	11.50%
M-F Gap	3.87%	7.58%	5.57%	2.58%	5.27%	4.00%	4.12%	4.86%	4.40%	5.06%	4.83%	3.54%
W-B Gap	3.58%	0.24%	1.64%	5.27%	6.97%	6.10%	4.36%	6.78%	6.63%	5.28%	-1.73%	-4.83%
W-H Gap	2.86%	-2.78%	0.58%	-14.12%	-10.88%	-12.65%	-8.87%	-4.97%	-0.15%	1.56%	-0.83%	-5.65%

Gaps in the Percentage of Tests Taken Receiving a "5" on the AP Exam by Subgroup Weighted by Enrollment*										
	1999	2000	2001	2002	2003	2004	2005	2006	2007	
Male	0.87%	0.86%	0.92%	0.87%	1.04%	1.32%	1.16%	1.37%	1.60%	
Female	0.58%	0.70%	0.62%	0.66%	0.71%	0.98%	0.83%	0.83%	1.09%	
White	0.60%	0.60%	0.61%	0.63%	0.75%	0.96%	0.79%	0.92%	1.14%	
Black	0.24%	0.06%	0.00%	0.00%	0.07%	0.07%	0.00%	0.06%	0.43%	
Hispanic	1.21%	4.41%	4.42%	3.73%	3.33%	3.66%	2.02%	1.74%	3.04%	
M-F Gap	0.29%	0.16%	0.30%	0.21%	0.33%	0.34%	0.33%	0.55%	0.50%	
W-B Gap	0.36%	0.53%	0.61%	0.63%	0.68%	0.90%	0.79%	0.86%	0.71%	
W-H Gap	-0.61%	-3.82%	-3.81%	-3.10%	-2.59%	-2.69%	-1.23%	-0.82%	-1.90%	

Gaps in the Number of Tests Taken Weighted by Subgroup Enrollment*



*The unit of analysis for AP data is the test, not the student. AP test results are presented as the number of scores received by members of each subgroup, NOT the number of students who received a given score on any exam. These numbers are not equivalent because some students take multiple tests.

