

Pennsylvania

NAEP proficiency level and percentile data as well as results from state assessments demonstrate the existence of substantial Excellence Gaps for African-American, Hispanic, and Free and Reduced Lunch Eligible students. White students had higher average AP scores than African-American and Hispanic students on AP tests and were more likely to make a “5” on an AP exam or take an AP exam. Pennsylvania state assessments have a much lower threshold for achieving excellence than most other states or the NAEP.

According to NAEP proficiency data, the percentage of students at the advanced level increased in both subjects and grades with the exception of Hispanic students in Grade 8 Reading. White and non-FARM students improved more rapidly than their peers with the exception of Hispanic students in Math and African-American students in Grade 8 Reading.

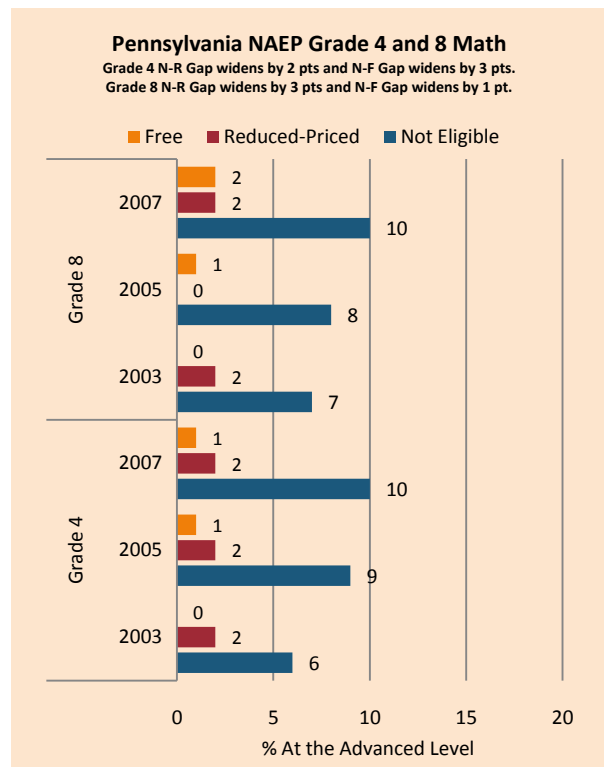
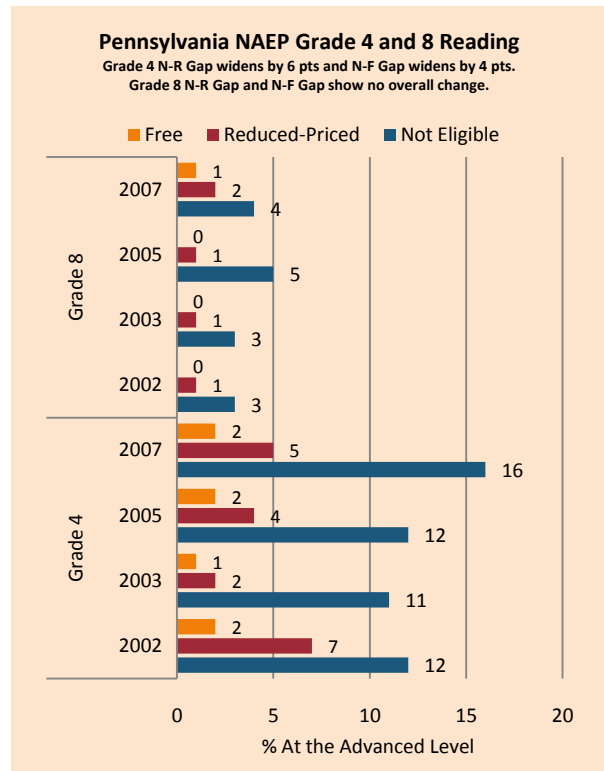
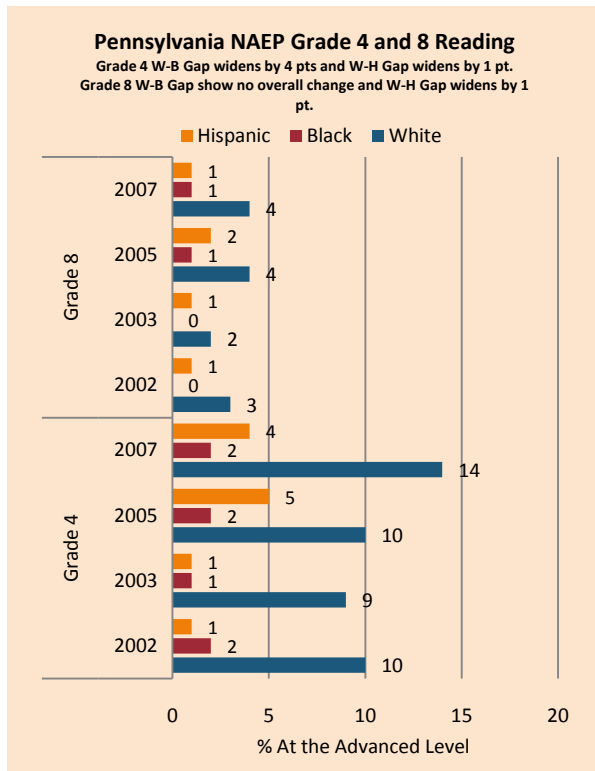
NAEP scale scores at the 90th percentile increased for most subgroups across assessments, with major gains by under-represented groups in Math Grade 8 lessening the Excellence Gap. Minority performance in Math Grade 4 was weak, leading to a widening of achievement gaps, which also increased for Hispanic students in Reading Grade 8 and FARM students in Reading Grade 4.

Since 2006, there has been a modest increase in the proportion of students from ethnic subgroups scoring at the advanced level on Grade 4 and 7 Math and Reading assessments, with little change in Grade 11. Since 2007 performance has improved for both affluent and low-income students across grade levels and subjects with the exception of a decline in Grade 7 Reading for minority students. There have been only small changes in achievement gaps, including increases in Grade 4 Reading and Grade 11 Math and Reading for low-income students.

On the AP exams, there were modest increases in the achievement gaps in mean AP scores, the percentage of tests receiving a 5 (weighted) and the number of tests taken. There were also increases in the gap between white and African-American students and a decrease in the gap between white and Hispanic students in the percentage of tests taken that received a 5 (unweighted).

Summary of State Policy as of 2006-2007

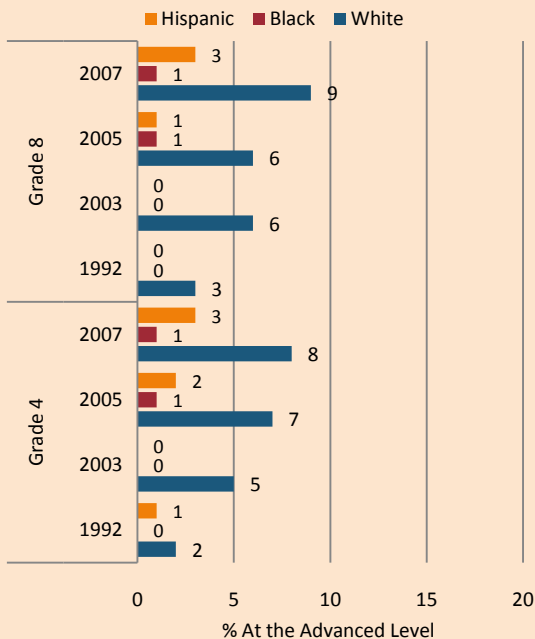
State	Mandate Identify	Mandate Services	Gifted Identified	Identified by Gender	Identified by Ethnicity	GT Funding	GT Funding per Identified
Pennsylvania	yes	yes	71,830	no	no	\$0	\$0



NAEP Scores at the 90 th Percentile				
Subject, Grade, Group	2003	2007	2003 Gap	2007 Gap
Math 4 Male	275	281	7	6
Math 4 Female	268	275		
Math 8 Male	326	333	6	8
Math 8 Female	319	325		
Reading 4 Male	261	269	4	3
Reading 4 Female	265	272		
Reading 8 Male	298	305	10	5
Reading 8 Female	308	310		
Math 4 ELL		245		33
Math 4 NonELL	271	278		
Math 8 ELL				
Math 8 NonELL	323	329		
Reading 4 ELL		241		29
Reading 4 NonELL	263	271		
Reading 8 ELL				
Reading 8 NonELL	304	308		
Math 4 FARM	256	261	20	22
Math 4 NonFARM	276	283		
Math 8 FARM	299	312	28	22

Pennsylvania NAEP Grade 4 and 8 Math

Grade 4 W-B Gap widens by 5 pts and W-H Gap widens by 4 pts.
Grade 8 W-B Gap widens by 5 pts and W-H Gap widens by 3 pts.



Math 8 NonFARM	327	334		
Reading 4 FARM	244	249	25	27
Reading 4 NonFARM	269	276		
Reading 8 FARM	288	295	20	17
Reading 8 NonFARM	308	312		
Math 4 White	273	274		
Math 4 Black	258	258	15	16
Math 4 Hispanic	256	252	16	21
Math 8 White	326	331		
Math 8 Black	285	304	41	26
Math 8 Hispanic	292	312	34	19
Reading 4 White	267	274		
Reading 4 Black	237	244	30	30
Reading 4 Hispanic	239	248	27	26
Reading 8 White	306	310		
Reading 8 Black	284	289	21	21
Reading 8 Hispanic	296	289	9	20

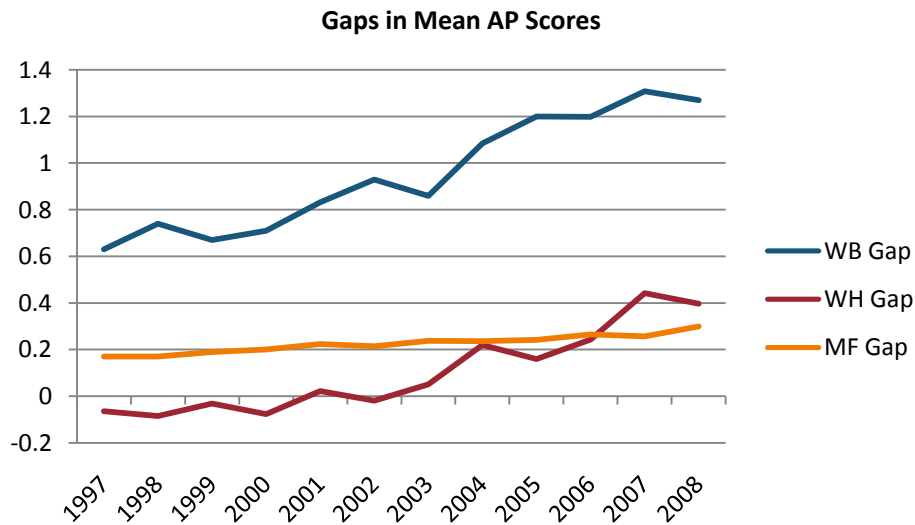
PA System of School Assessment Grade 4 (5), 7 (8), 11 English/Language Arts Excellence Achievement Gaps on Race															
% At the Advanced Level	Grade 4					Grade 7					Grade 11				
	W	B	H	W-B	W-H	W	B	H	W-B	W-H	W	B	H	W-B	W-H
2002											17	3	4	14	13
2003	Data not Available										23	5	5	18	18
2004	Data not Available										31	6	9	25	22
2005	Data not Available										38	9	13	29	25
2006	37	10	12	27	25	41	13	14	28	27	36	9	11	27	25
2007	37	13	14	24	23	43	14	16	29	27	33	8	10	25	23
2008	40	13	16	27	24	42	15	17	27	25	36	10	12	26	24

PA System of School Assessment Grade 4(5), 7 (8), 11 (12) Mathematics Excellence Achievement Gaps on Race															
% At the Advanced Level	Grade 4					Grade 7					Grade 11				
	W	B	H	W-B	W-H	W	B	H	W-B	W-H	W	B	H	W-B	W-H
2002	Data not Available										25	4	7	21	18
2003	Data not Available										26	4	6	22	20
2004	Data not Available										28	5	6	23	22

2005											30	6	9	24	21
2006	50	18	21	32	29	43	13	18	30	25	32	7	9	25	23
2007	54	21	25	33	29	48	15	21	33	27	27	6	8	21	19
2008	57	24	30	33	27	50	19	22	31	28	29	7	9	22	20

PA System of School Assessment Grade 4, 7, 11 Reading Excellence Achievement Gaps on SES									
% At the Advanced Level	Grade 4			Grade 7			Grade 11		
	N	P	Gap	N	P	Gap	N	P	Gap
2007	41.2	15.9	25.3	46.1	18.0	28.1	33.9	12.0	21.9
2008	44.9	17.0	27.9	45.9	17.9	28.0	37.7	14.0	23.7

PA System of School Assessment Grade 4, 7, 11 Mathematics Excellence Achievement Gaps on SES									
% At the Advanced Level	Grade 4			Grade 7			Grade 11		
	N	P	Gap	N	P	Gap	N	P	Gap
2007	57.6	28.2	29.4	51.0	21.8	29.2	28.5	9.8	18.7
2008	61.0	32.0	29.0	54.4	24.5	29.9	30.9	10.9	20.0

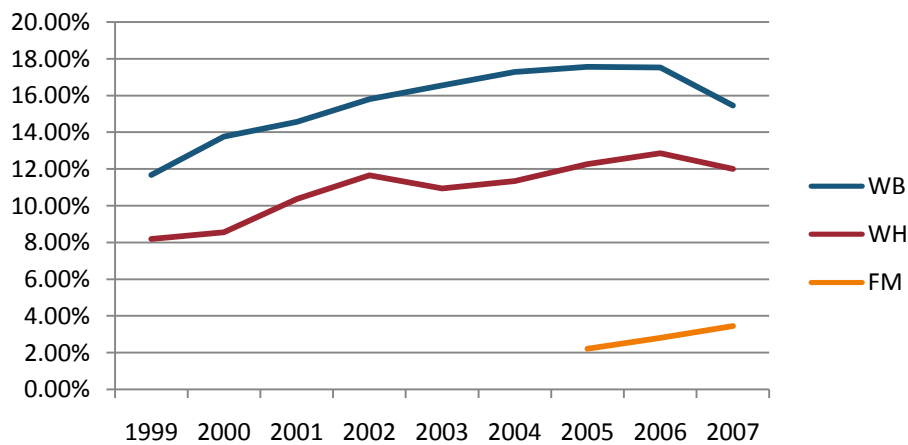


Gaps in the Percentage of Tests Taken Receiving a "5" on the AP Exam by Subgroup*

	1997	1998	1999	2000	2001	2002	2003	2004	2005	2006	2007	2008
Male	16.65%	17.04%	17.37%	17.88%	18.45%	19.16%	19.52%	20.54%	20.24%	21.07%	21.18%	21.64%
Female	11.76%	11.92%	11.97%	12.08%	12.15%	13.39%	12.44%	13.69%	13.82%	14.12%	14.64%	14.02%
White	13.47%	13.78%	14.06%	14.44%	14.79%	15.75%	15.56%	16.70%	16.55%	17.23%	17.60%	17.36%
Black	5.60%	4.64%	5.76%	5.49%	4.44%	4.57%	3.65%	4.07%	3.89%	4.19%	3.45%	3.75%
Hispanic	18.70%	20.96%	20.37%	20.47%	18.67%	19.11%	18.65%	17.51%	16.01%	16.69%	15.27%	15.17%
M-F Gap	4.90%	5.13%	5.40%	5.81%	6.31%	5.77%	7.08%	6.85%	6.42%	6.95%	6.55%	7.62%
W-B Gap	7.87%	9.14%	8.30%	8.95%	10.35%	11.18%	11.91%	12.64%	12.66%	13.04%	14.16%	13.62%
W-H Gap	-5.23%	-7.18%	-6.31%	-6.03%	-3.88%	-3.36%	-3.09%	-0.81%	0.54%	0.54%	2.33%	2.19%

Gaps in the Percentage of Tests Taken Receiving a "5" on the AP Exam by Subgroup Weighted by Enrollment*										
	1999	2000	2001	2002	2003	2004	2005	2006	2007	
Male							4.28%	4.52%	4.44%	
Female							3.23%	3.42%	3.57%	
White	2.09%	2.48%	2.70%	3.11%	3.11%	3.57%	3.74%	3.96%	3.89%	
Black	0.19%	0.19%	0.16%	0.18%	0.12%	0.17%	0.20%	0.23%	0.23%	
Hispanic	1.37%	1.76%	1.47%	1.55%	1.68%	1.76%	1.65%	1.69%	1.54%	
M-F Gap							1.05%	1.09%	0.87%	
W-B Gap	1.91%	2.29%	2.54%	2.93%	2.98%	3.40%	3.54%	3.73%	3.66%	
W-H Gap	0.73%	0.72%	1.23%	1.57%	1.43%	1.81%	2.09%	2.27%	2.35%	

Gaps in the Number of Tests Taken Weighted by Subgroup Enrollment*



*The unit of analysis for AP data is the test, not the student. AP test results are presented as the number of scores received by members of each subgroup, NOT the number of students who received a given score on any exam. These numbers are not equivalent because some students take multiple tests.

