

Michigan

NAEP proficiency level and percentile data as well as results from state assessments demonstrate the existence of substantial Excellence Gaps for African-American, Hispanic, and Free and Reduced Lunch Eligible students. White students had higher average AP scores than African-American and Hispanic students on AP tests and were more likely to make a “5” on an AP exam or take an AP exam. Michigan state assessments have a much lower threshold for achieving excellence than most other states or the NAEP.

According to NAEP proficiency data, the percentage of students at the advanced level increased for FARM and white students in Math Grade 8, for African-American students in Reading Grade 4, Hispanic students in Grade 4 Math, and for non-FARM students in Math Grade 8 and Reading Grade 4. Excellence Gaps rose in Math Grade 8, while they narrowed for African-American students in both grades of Reading and Hispanic students in Math Grade 4.

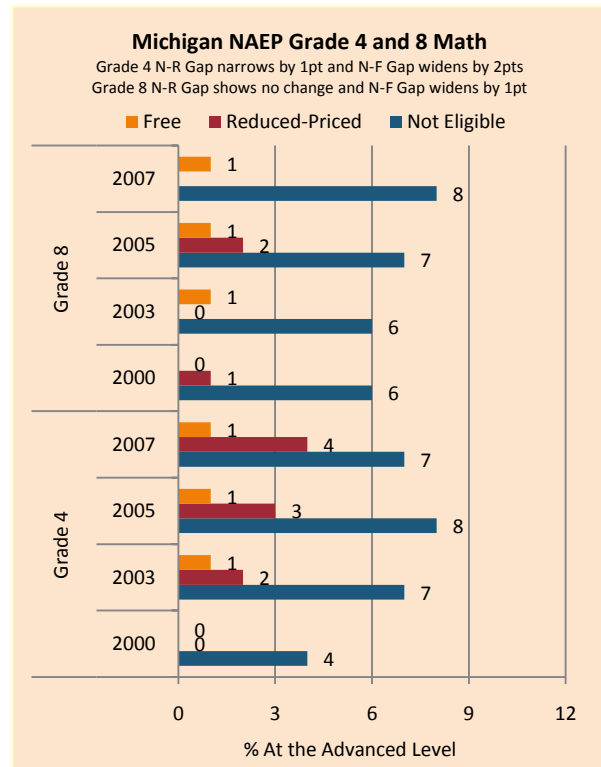
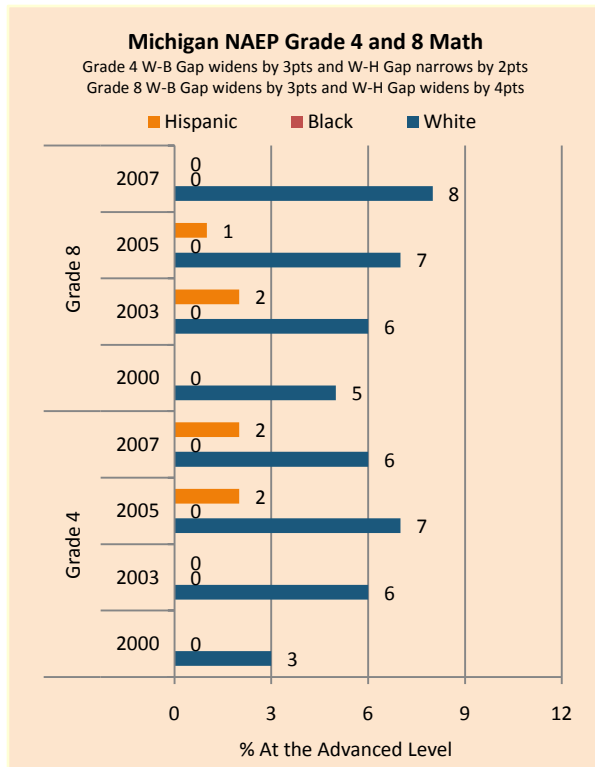
NAEP scale scores at the 90th percentile increased in Math Grade 4 across subgroups, with FARM, African-American, and Hispanic students narrowing the achievement gap. The Excellence Gap expanded in Math Grade 8 in part because of declines among minority subgroups, it narrowed in Reading Grade 4 due to advances by African-American and Hispanic students and stagnation among white students. There were broad declines in performance in Reading Grade 8, with African American and Hispanic students’ performances falling sharply.

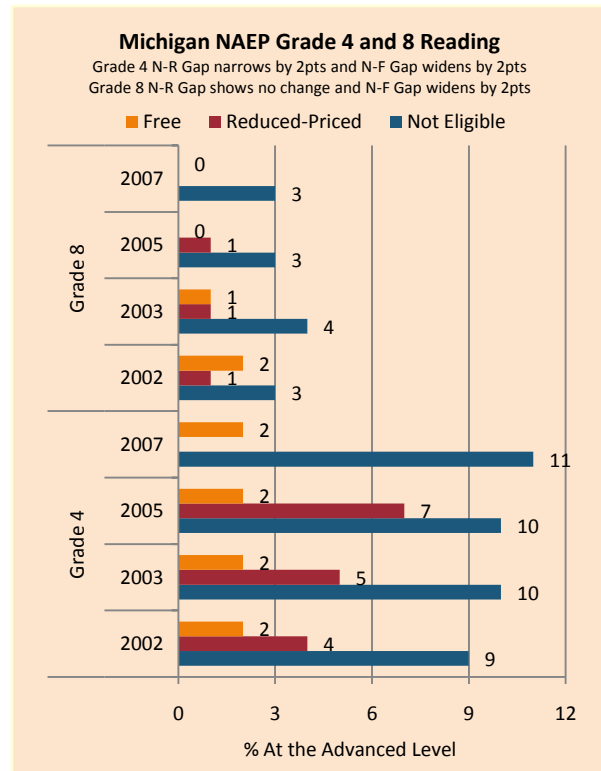
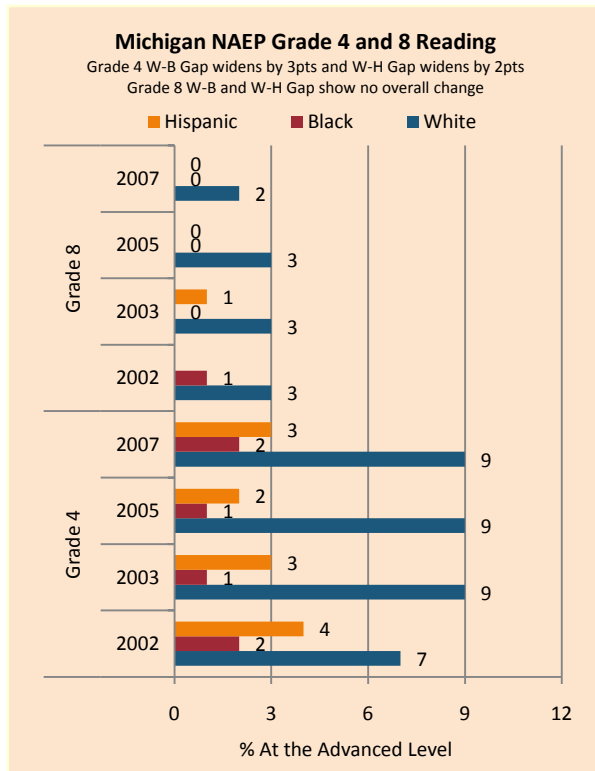
An increasing percentage of white, African-American, and Hispanic students, as well as both higher and lower income students, performed at the advanced level on Grade 4 and 7 Math and Reading assessments. White and affluent student representation increased more quickly than for poor or minority students.

On the AP exams, there were modest achievement gaps in mean scores, the percentage of exams scoring a 5 (weighted) and number of tests taken (weighted). There were increases in the gap between white and African-American students, along with a decrease in the gap between white and Hispanic students, in the percentage of exams scoring a 5.

Summary of State Policy as of 2006-2007

State	Mandate Identify	Mandate Services	Gifted Identified	Identified by Gender	Identified by Ethnicity	GT Funding	GT Funding per Identified
Michigan	no	no	52,756	no	yes	\$285,000	\$5.40



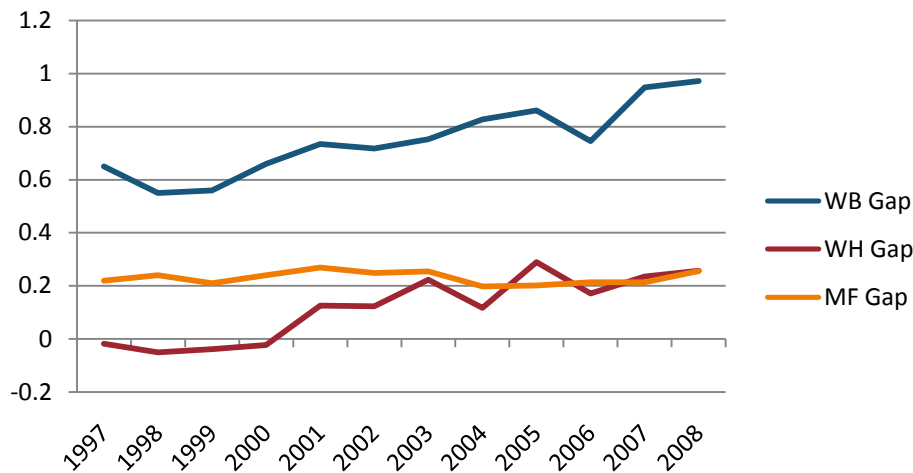


NAEP Scores at the 90 th Percentile				
Subject, Grade, Group	2003	2007	2003 Gap	2007 Gap
Math 4 Male	274	275	5	4
Math 4 Female	269	271		
Math 8 Male	323	326	4	3
Math 8 Female	319	322		
Reading 4 Male	260	261	5	5
Reading 4 Female	265	266		
Reading 8 Male	300	296	8	10
Reading 8 Female	308	306		
Math 4 ELL	271	271	0	2
Math 4 NonELL	272	273		
Math 8 ELL				
Math 8 NonELL	321	324		
Reading 4 ELL	257	243	6	21
Reading 4 NonELL	263	264		
Reading 8 ELL				
Reading 8 NonELL	305	301		
Math 4 FARM	255	260	22	18
Math 4 NonFARM	277	278		
Math 8 FARM	304	305	21	24

Above Advanced Level	N	P	Gap	N	P	Gap	N	P	Gap
2005	28	11	17	31	12	19			
2006	43	19	24	33	13	20			
2007	42	19	23	38	15	23			

Michigan Educational Assessment Program and Michigan Merit Examination Grade 4, 7, 10 Mathematics Excellence Achievement Gaps on SES									
% At or Above Advanced Level	Grade 4			Grade 7			Grade 11		
	N	P	Gap	N	P	Gap	N	P	Gap
2005	36	16	20	44	19	25			
2006	44	20	24	44	17	27			
2007	52	26	26	51	23	28			

Gaps in Mean AP Scores



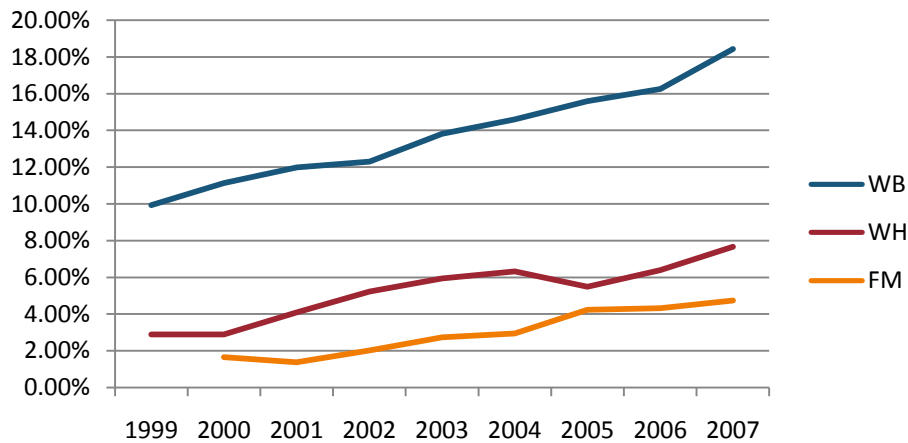
Gaps in the Percentage of Tests Taken Receiving a "5" on the AP Exam by Subgroup*

	1997	1998	1999	2000	2001	2002	2003	2004	2005	2006	2007	2008
Male	15.13%	16.12%	16.43%	16.37%	16.79%	17.29%	17.00%	17.35%	17.11%	17.76%	18.14%	19.67%
Female	10.61%	9.85%	10.52%	10.29%	9.81%	10.76%	10.62%	12.08%	12.43%	12.71%	12.92%	13.29%
White	12.00%	11.87%	12.42%	12.56%	12.46%	13.16%	13.22%	14.12%	13.68%	14.02%	14.38%	15.29%
Black	3.71%	4.39%	3.15%	3.53%	2.97%	3.85%	4.14%	3.73%	4.36%	8.69%	3.65%	3.59%
Hispanic	15.36%	14.79%	15.09%	16.24%	15.37%	14.01%	12.84%	13.40%	11.23%	11.97%	12.49%	13.00%
M-F Gap	4.52%	6.27%	5.91%	6.07%	6.98%	6.53%	6.37%	5.27%	4.68%	5.05%	5.22%	6.37%

W-B Gap	8.29%	7.48%	9.27%	9.03%	9.49%	9.31%	9.07%	10.39%	9.32%	5.33%	10.73%	11.70%
W-H Gap	-3.36%	-2.92%	-2.66%	-3.69%	-2.91%	-0.85%	0.38%	0.72%	2.45%	2.04%	1.89%	2.29%

Gaps in the Percentage of Tests Taken Receiving a "5" on the AP Exam by Subgroup Weighted by Enrollment*									
	1999	2000	2001	2002	2003	2004	2005	2006	2007
Male		2.42%	2.75%	2.94%	2.92%	3.15%	3.24%	3.51%	3.88%
Female		1.69%	1.74%	2.05%	2.12%	2.55%	2.88%	3.06%	3.38%
White	1.62%	1.90%	2.05%	2.29%	2.45%	2.76%	2.84%	3.05%	3.47%
Black	0.10%	0.14%	0.13%	0.20%	0.20%	0.18%	0.23%	0.48%	0.21%
Hispanic	1.53%	1.99%	1.90%	1.71%	1.62%	1.77%	1.72%	1.84%	2.05%
M-F Gap		0.73%	1.01%	0.89%	0.81%	0.60%	0.36%	0.45%	0.50%
W-B Gap	1.52%	1.76%	1.92%	2.09%	2.26%	2.57%	2.62%	2.57%	3.26%
W-H Gap	0.09%	-0.09%	0.15%	0.59%	0.83%	0.99%	1.13%	1.21%	1.42%

Gaps in the Number of Tests Taken Weighted by Subgroup Enrollment*



*The unit of analysis for AP data is the test, not the student. AP test results are presented as the number of scores received by members of each subgroup, NOT the number of students who received a given score on any exam. These numbers are not equivalent because some students take multiple tests.

