

Colorado

NAEP proficiency level and percentile data as well as results from state assessments demonstrate the existence of substantial Excellence Gaps for African-American, Hispanic, and Free and Reduced Lunch Eligible students. White students had higher average AP scores than African-American and Hispanic students on AP tests and were more likely to make a “5” on an AP exam or take an AP exam.

According to NAEP proficiency data, the percentage of students at the advanced level increased in Math for all but FARM students in Grade 8, while the Excellence Gap increased for FARM and Hispanic students and African-American students in Grade 4. In Reading, non-FARM and white students improved in Grade 4 but declined in Grade 8, while Hispanic and FARM students’ performances deteriorated in both Grades. The Excellence Gap narrowed in Reading Grade 8, while in Grade 4 it increased for African-American and FARM students.

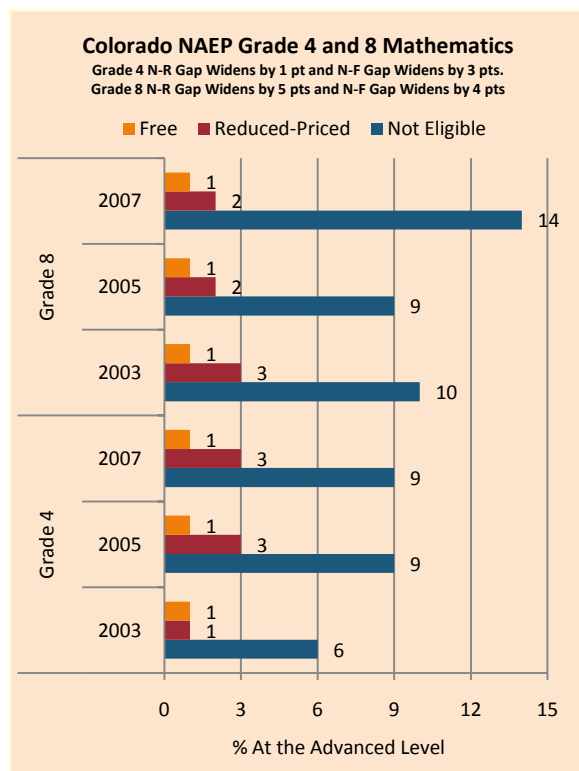
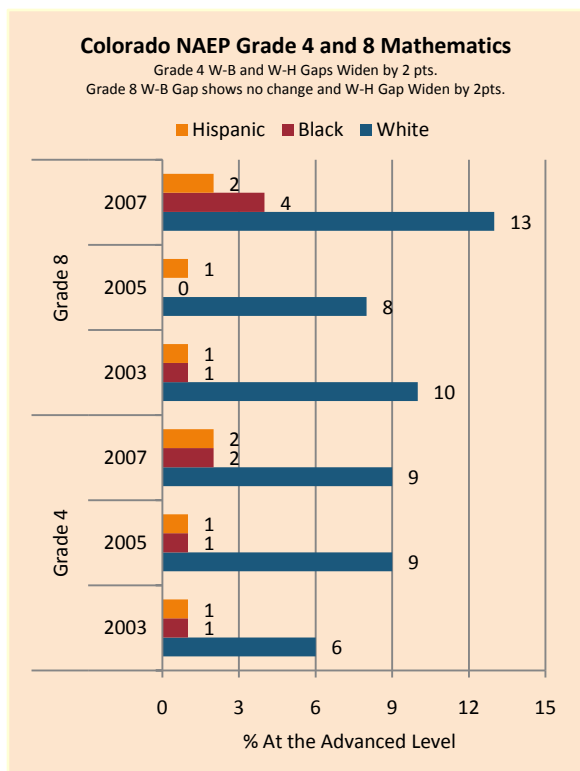
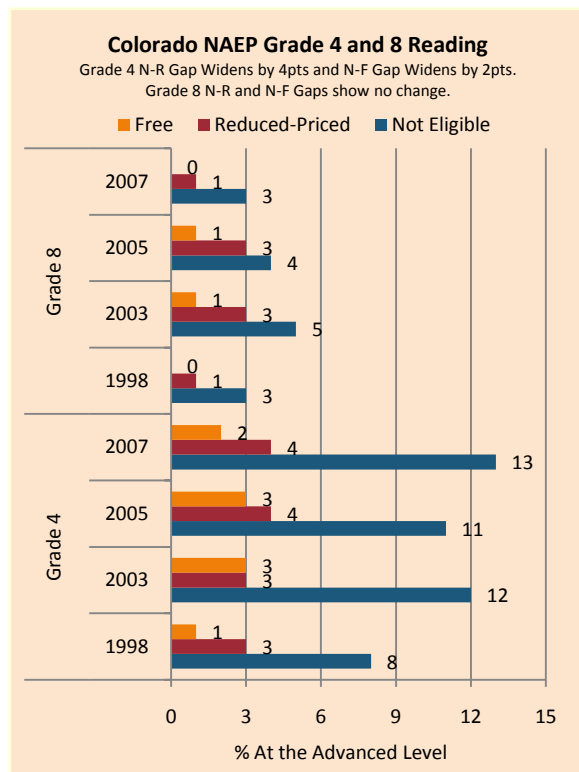
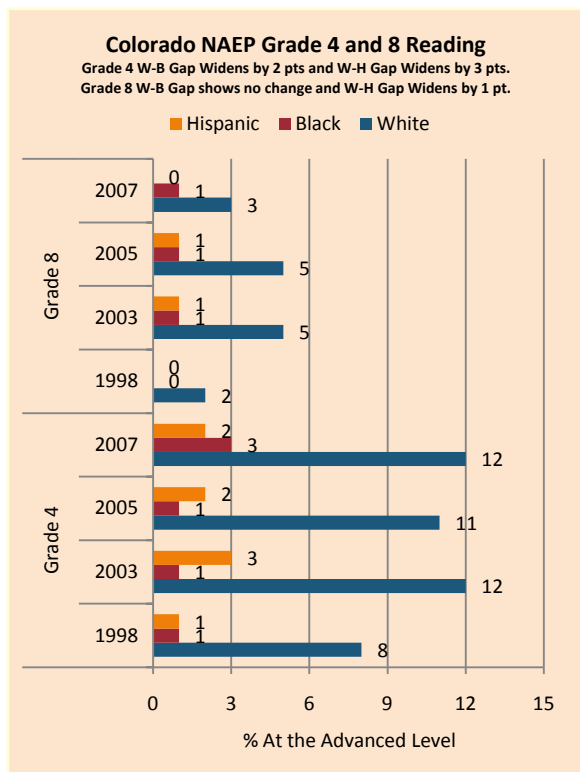
NAEP scale scores at the 90th percentile increased in Math, with major gains for African-American students in Grade 8. Non-FARM and white students improved in Reading Grade 4 while other subgroups’ scores were flat or declined. A narrowing of the achievement gap in Reading Grade 8 was partly due to greater declines among white and non-FARM students.

The proportion of students scoring at the highest level of student achievement trended upwards in all grades among ethnic and income subgroups in Math and in Grade 7 and 10 Reading, with an accompanying increase in the size of the Excellence Gap for African-American, Hispanic, and low-income students. The gap has shrunk in Grade 7 Reading due to a decline in the performance of white and higher-income students and stagnation among other under-represented populations.

On AP exams, there were increases in the achievement gaps as measured by the percentage of tests taken which received a 5 on the AP test, the percentage of tests taken receiving a 5 weighted by enrollment, and the number of tests taken weighted by enrollment.

Summary of State Policy as of 2006-2007

State	Mandate Identify	Mandate Services	Gifted Identified	Identified by Gender	Identified by Ethnicity	GT Funding	GT Funding per Identified
Colorado	yes	yes	56,133	no	yes	\$7,700,000	\$137.17



NAEP Scores at the 90 th Percentile				
Subject, Grade, Group	2003	2007	2003 Gap	2007 Gap
Math 4 Male	274	279	5	6
Math 4 Female	269	273		
Math 8 Male	329	334	2	4
Math 8 Female	327	330		
Reading 4 Male	263	264	6	6
Reading 4 Female	269	269		
Reading 8 Male	302	299	14	11
Reading 8 Female	317	309		
Math 4 ELL	240	247	33	31
Math 4 NonELL	273	278		
Math 8 ELL	277	282	52	52
Math 8 NonELL	329	333		
Reading 4 ELL	236	230	32	38
Reading 4 NonELL	267	269		
Reading 8 ELL	271	264	39	41
Reading 8 NonELL	310	305		
Math 4 FARM	255	260	21	21
Math 4 NonFARM	276	281		
Math 8 FARM	305	310	28	28
Math 8 NonFARM	333	338		
Reading 4 FARM	251	247	20	26
Reading 4 NonFARM	270	273		
Reading 8 FARM	291	290	22	18
Reading 8 NonFARM	314	308		
Math 4 White	275	280		
Math 4 Black	252	261	23	19
Math 4 Hispanic	253	260	23	20
Math 8 White	333	337		
Math 8 Black	297	318	36	19
Math 8 Hispanic	303	306	30	31
Reading 4 White	270	272		
Reading 4 Black	248	248	23	24
Reading 4 Hispanic	250	246	21	26
Reading 8 White	313	309		
Reading 8 Black	292	291	21	18
Reading 8 Hispanic	287	289	26	20

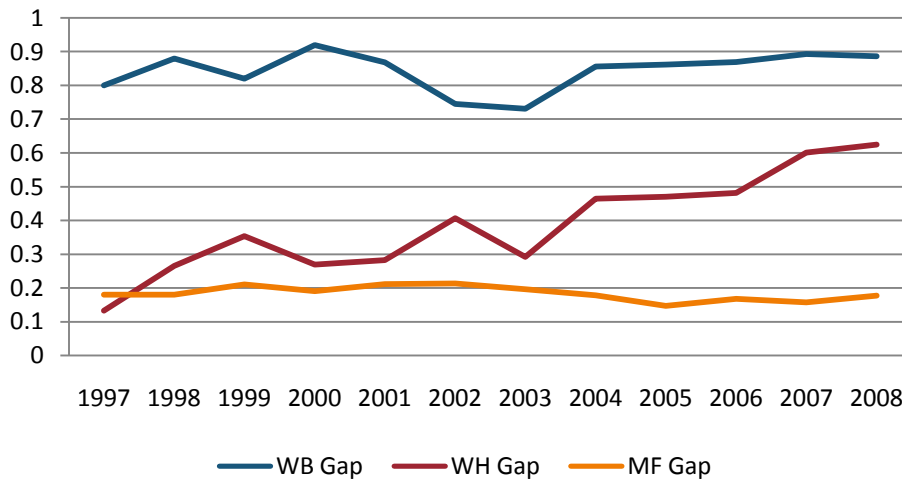
CO Student Assessment Program Grade 4, 7, 10 Reading Excellence Achievement Gaps on Race															
% At or Above Advanced Level	Grade 4					Grade 7					Grade 10				
	W	B	H	W-B	W-H	W	B	H	W-B	W-H	W	B	H	W-B	W-H
2001	10	2	2	8	8	10	2	2	8	8	9	2	2	7	7
2002	9	2	2	7	7	10	2	1	8	9	9	2	2	7	7
2003	9	2	2	7	7	10	2	1	8	9	12	3	2	9	10
2004	7	2	1	5	6	9	2	1	7	8	13	3	2	10	11
2005	10	2	2	8	8	12	2	2	10	10	12	3	2	9	10
2006	7	1	1	6	6	11	2	2	9	9	15	4	3	11	12
2007	9	2	2	7	7	12	3	2	9	10	12	3	2	9	10
2008	6	1	1	5	5	13	3	2	10	11	14	4	3	10	11

CO Student Assessment Program Grade 4, 7, 10 Mathematics Excellence Achievement Gaps on Race															
% At or Above Advanced Level	Grade 4					Grade 7					Grade 10				
	W	B	H	W-B	W-H	W	B	H	W-B	W-H	W	B	H	W-B	W-H
2001	Not Available in 2001 to 2004					Not Available in 2001					4	0	0	4	4
2002						15	2	2	13	13	4	0	1	4	3
2003						18	3	3	15	15	5	0	1	5	4
2004						19	4	4	15	15	4	0	1	4	3
2005	29	9	9	20	20	24	5	5	19	19	6	0	1	6	5
2006	33	11	12	22	21	24	4	5	20	19	6	0	1	6	5
2007	35	12	12	23	23	28	8	6	20	22	7	1	1	6	6
2008	34	12	12	22	22	24	6	6	18	18	7	1	1	6	6

CO Students Assessment Program Grade 4, 7, 10 Reading Excellence Achievement Gaps on SES									
% At or Above Advanced Level	Grade 4			Grade 7			Grade 10		
	N	P	Gap	N	P	Gap	N	P	Gap
2004	7	1	6	10	1	9	12	2	10
2005	10	2	8	12	2	10	11	2	9
2006	8	1	7	11	2	9	15	3	12
2007	9	2	7	12	2	10	11	2	9
2008	6	1	5	13	2	11	14	3	11

CO Students Assessment Program Grade 4, 7, 10 Mathematics Excellence Achievement Gaps on SES									
% At or Above Advanced Level	Grade 4			Grade 7			Grade 10		
	N	P	Gap	N	P	Gap	N	P	Gap
2004	Not Available in 2001			20	4	16	4	1	3
2005	30	9	21	24	5	19	6	1	5
2006	34	12	22	24	5	19	6	1	5
2007	36	13	23	29	7	22	6	1	5
2008	35	12	23	25	6	19	6	1	5

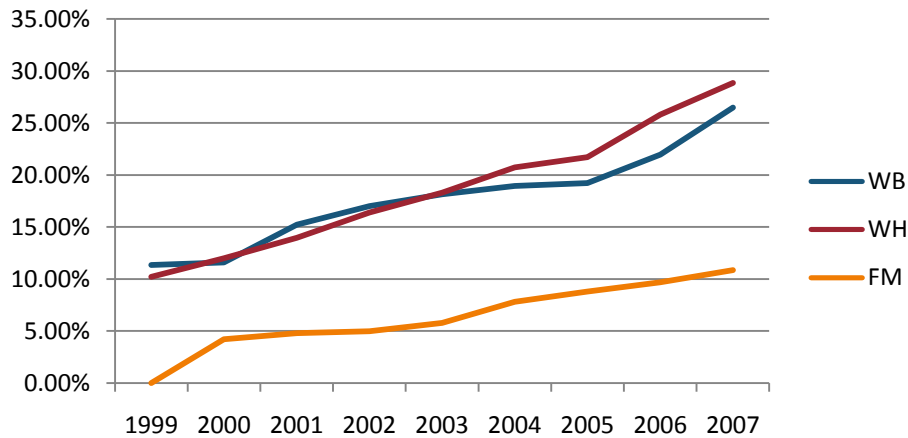
Gaps in Mean AP Scores



Gaps in the Percentage of Tests Taken Receiving a "5" on the AP Exam by Subgroup*												
	1997	1998	1999	2000	2001	2002	2003	2004	2005	2006	2007	2008
Male	16.81%	16.35%	16.63%	17.05%	16.16%	17.58%	16.42%	15.64%	14.97%	15.22%	14.36%	15.20%
Female	12.52%	11.17%	11.28%	11.64%	10.55%	12.27%	11.77%	11.21%	11.23%	10.63%	10.24%	10.39%
White	14.10%	13.66%	13.55%	14.34%	13.29%	15.05%	14.01%	13.73%	13.39%	13.00%	12.58%	13.27%
Black	5.13%	2.64%	6.31%	3.72%	3.34%	3.91%	4.51%	3.50%	3.37%	3.92%	2.95%	2.78%
Hispanic	17.34%	13.53%	13.09%	15.07%	14.34%	11.79%	14.18%	10.07%	9.51%	8.43%	7.38%	7.37%
M-F Gap	4.29%	5.18%	5.35%	5.41%	5.61%	5.31%	4.65%	4.43%	3.74%	4.59%	4.12%	4.82%
W-B Gap	8.97%	11.01%	7.24%	10.62%	9.95%	11.14%	9.50%	10.22%	10.02%	9.08%	9.63%	10.48%
W-H Gap	-3.23%	0.12%	0.46%	-0.73%	-1.05%	3.26%	-0.17%	3.66%	3.88%	4.57%	5.20%	5.89%

Gaps in the Percentage of Tests Taken Receiving a "5" on the AP Exam by Subgroup Weighted by Enrollment*									
	1999	2000	2001	2002	2003	2004	2005	2006	2007
Male		3.14%	3.18%	3.77%	3.94%	4.07%	4.25%	4.72%	4.87%
Female		2.64%	2.58%	3.24%	3.51%	3.79%	4.18%	4.33%	4.59%
White	2.47%	3.05%	3.10%	3.85%	4.05%	4.45%	4.72%	5.06%	5.53%
Black	0.43%	0.36%	0.27%	0.33%	0.48%	0.47%	0.54%	0.66%	0.51%
Hispanic	1.05%	1.39%	1.34%	1.08%	1.50%	1.18%	1.28%	1.11%	1.11%
M-F Gap		0.51%	0.60%	0.53%	0.43%	0.28%	0.07%	0.39%	0.28%
W-B Gap	2.04%	2.69%	2.83%	3.51%	3.56%	3.98%	4.18%	4.39%	5.01%
W-H Gap	1.42%	1.66%	1.76%	2.77%	2.55%	3.28%	3.43%	3.95%	4.41%

Gaps in the Number of Tests Taken Weighted by Subgroup Enrollment*



*The unit of analysis for AP data is the test, not the student. AP test results are presented as the number of scores received by members of each subgroup, NOT the number of students who received a given score on any exam. These numbers are not equivalent because some students take multiple tests.