

California

NAEP proficiency level and percentile data as well as results from state assessments demonstrate the existence of substantial Excellence Gaps for African-American, Hispanic, and Free and Reduced Lunch Eligible students. White students had higher average AP scores than African-American and Hispanic students on AP tests and were more likely to make a “5” on an AP exam or take an AP exam.

According to NAEP proficiency data, the percentage of students at the advanced level increased in Math for non-FARM and white students in both grades and for African-American and Hispanic students in Grade 4, resulting in an increase in the Excellence Gap. Scores were essentially flat in Reading, changes driven by improvements in white students’ performances in Grade 4 and declines in Grade 8.

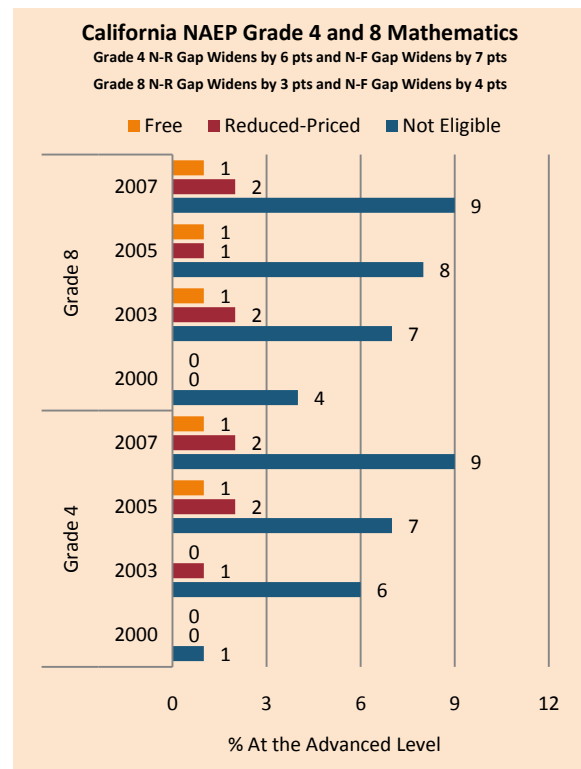
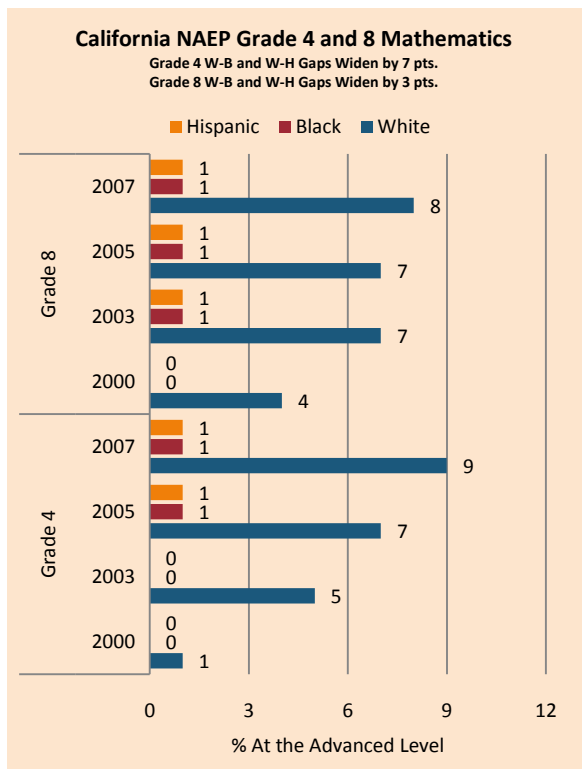
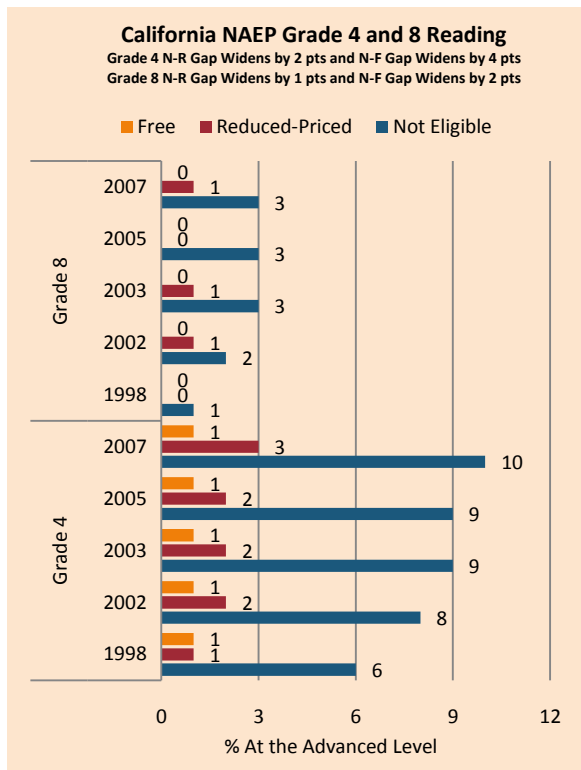
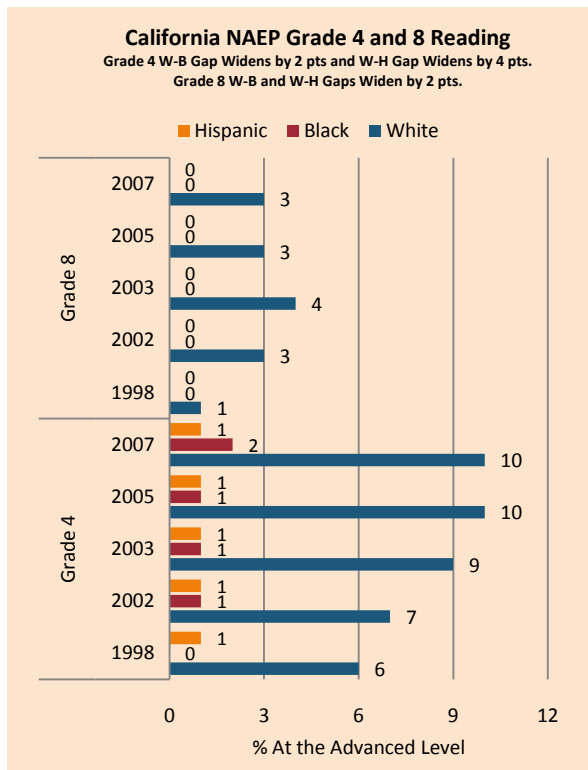
NAEP scale scores at the 90th percentile increased in Math (both grades) and Reading Grade 4, with FARM, African-American, and Hispanic students improving more rapidly than white and non-FARM students. Performance declined in Reading Grade 8 for all but Hispanic students, who stagnated.

The proportion of students scoring at the highest level of achievement has increased steadily across grade levels for ethnic and income subgroups in both subjects. However, the percentage of high-performing white and affluent students has expanded more rapidly than for African-American, Hispanic, and low-income students.

On AP exams, there were increases in the gap between white and African-American students in the percentage of tests which scored a 5 on the AP exam, though there was a decrease in the gap between white and Hispanic students. There were increases in achievement gaps as measured by percentage of tests that received a 5 on the AP exam weighted by enrollment as well as an increase in the number of tests taken weighted by enrollment.

Summary of State Policy as of 2006-2007

State	Mandate Identify	Mandate Services	Gifted Identified	Identified by Gender	Identified by Ethnicity	GT Funding	GT Funding per Identified
California	no	no	512,698	yes	yes	\$54,000,000	\$105.33



NAEP Scores at the 90 th Percentile				
Subject, Grade, Group	2003	2007	2003 Gap	2007 Gap
Math 4 Male	269	272	5	3
Math 4 Female	263	269		
Math 8 Male	319	322	3	4
Math 8 Female	316	318		
Reading 4 Male	252	252	7	9
Reading 4 Female	259	260		
Reading 8 Male	295	292	7	10
Reading 8 Female	302	301		
Math 4 ELL	245	249	26	27
Math 4 NonELL	271	276		
Math 8 ELL	281	285	40	39
Math 8 NonELL	321	324		
Reading 4 ELL	229	229	32	34
Reading 4 NonELL	261	263		
Reading 8 ELL	266	262	36	38
Reading 8 NonELL	302	301		
Math 4 FARM	251	257	25	23
Math 4 NonFARM	276	280		
Math 8 FARM	296	302	32	28
Math 8 NonFARM	328	330		
Reading 4 FARM	237	240	29	27
Reading 4 NonFARM	266	267		
Reading 8 FARM	284	282	23	23
Reading 8 NonFARM	307	305		
Math 4 White	276	280		
Math 4 Black	247	256	28	24
Math 4 Hispanic	250	255	26	25
Math 8 White	326	330		
Math 8 Black	288	299	38	31
Math 8 Hispanic	294	299	32	31
Reading 4 White	266	268		
Reading 4 Black	239	244	27	24
Reading 4 Hispanic	237	240	30	28
Reading 8 White	307	306		
Reading 8 Black	283	281	24	25
Reading 8 Hispanic	282	282	24	24

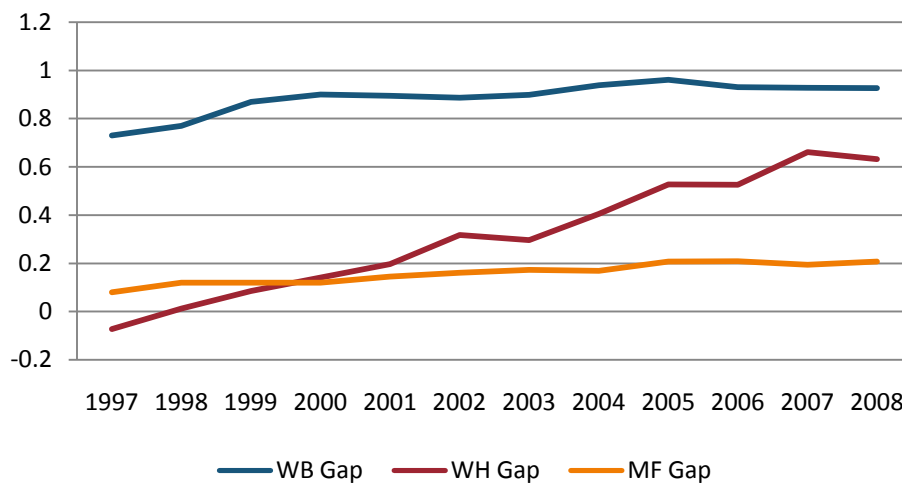
CA Standards Test Grade 4, 7, 10 English/Language Arts Excellence Achievement Gaps on Race															
% At or Above Advanced Level	Grade 4					Grade 7					Grade 10				
	W	B	H	W-B	W-H	W	B	H	W-B	W-H	W	B	H	W-B	W-H
2003	28	8	6	20	22	17	3	3	14	14	19	4	3	15	16
2004	29	8	7	21	22	20	4	4	16	16	24	6	5	18	19
2005	35	11	9	24	26	23	6	5	17	18	23	7	5	16	18
2006	40	14	12	26	28	28	7	6	21	22	27	7	6	20	21
2007	42	15	13	27	29	28	7	7	21	21	27	7	7	20	20
2008	46	17	15	29	31	34	10	9	24	25	30	9	9	21	21

CA Standards Test Grade 4, 7, 10 Mathematics Excellence Achievement Gaps on Race															
% At or Above Advanced Level	Grade 4					Grade 7					Grade 10				
	W	B	H	W-B	W-H	W	B	H	W-B	W-H	W	B	H	W-B	W-H
2003	27	8	10	19	17	11	1	2	10	9	15	2	1	13	14
2004	28	8	10	20	18	16	2	3	14	13	19	5	5	14	14
2005	38	14	16	24	22	19	4	5	15	14	19	2	5	17	14
2006	40	16	18	24	22	21	4	6	17	15	24	7	9	17	15
2007	41	18	20	23	21	21	5	6	16	15	28	8	8	20	20
2008	44	19	23	25	21	21	5	7	16	14	27	10	8	17	19

CA Standards Test Grade 4, 7, 10 English/Language Arts Excellence Achievement Gaps on SES									
% At or Above Advanced Level	Grade 4			Grade 7			Grade 10		
	N	P	Gap	N	P	Gap	N	P	Gap
2001	20	3	17	14	2	12	15	3	12
2002	25	4	21	12	2	10	17	3	14
2003	28	6	22	16	3	13	16	3	13
2004	30	7	23	19	3	16	20	5	15
2005	37	9	28	22	5	17	21	5	16
2006	41	12	29	27	6	21	24	6	18
2007	43	12	31	28	7	21	24	6	18
2008	47	15	32	34	9	25	28	9	19

CA Standards Test Grade 4, 7, 10 Mathematics Excellence Achievement Gaps on SES									
% At or Above Advanced Level	Grade 4			Grade 7			Grade 10		
	N	P	Gap	N	P	Gap	N	P	Gap
2002	22	6	16	9	2	7	20	4	16
2003	29	10	19	12	2	10	19	4	15
2004	30	10	20	16	4	12	24	8	16
2005	40	16	24	21	5	16	24	11	13
2006	43	18	25	22	6	16	28	13	15
2007	44	20	24	21	7	14	32	14	18
2008	47	22	25	22	7	15	33	14	19

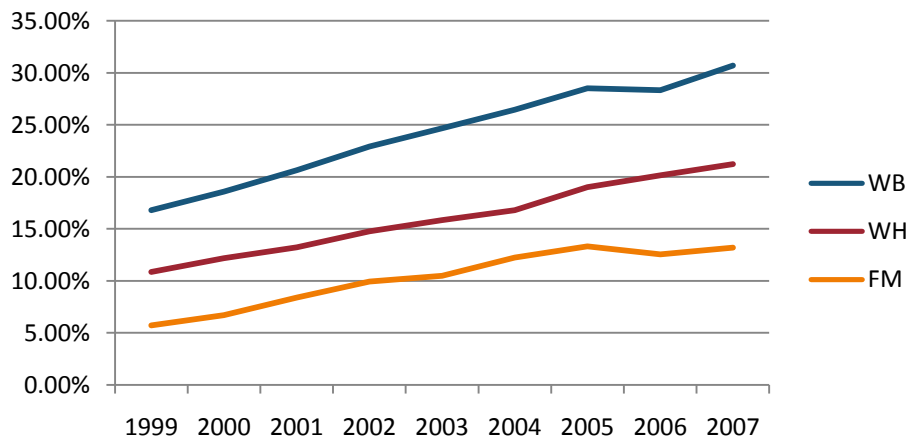
Gaps in the Mean AP Scores



Gaps in the Percentage of Tests Taken Receiving a "5" on the AP Exam by Subgroup*												
	1997	1998	1999	2000	2001	2002	2003	2004	2005	2006	2007	2008
Male	16.97%	17.27%	17.12%	16.95%	15.71%	15.88%	16.10%	16.17%	15.11%	15.92%	16.20%	17.14%
Female	15.97%	14.83%	14.93%	15.09%	13.34%	12.90%	13.26%	12.94%	11.17%	11.81%	12.19%	12.90%
White	14.49%	14.84%	15.18%	15.13%	13.97%	14.56%	14.00%	14.87%	14.33%	14.68%	15.79%	16.42%
Black	5.13%	5.13%	4.41%	4.31%	3.75%	4.20%	3.58%	4.23%	3.48%	4.15%	4.03%	4.26%
Hispanic	26.01%	22.09%	21.05%	22.43%	18.63%	14.77%	18.05%	14.06%	8.92%	10.25%	8.26%	9.78%
M-F Gap	1.00%	2.44%	2.19%	1.86%	2.38%	2.97%	2.84%	3.23%	3.93%	4.10%	4.01%	4.23%
W-B Gap	9.37%	9.71%	10.77%	10.81%	10.22%	10.36%	10.42%	10.64%	10.85%	10.53%	11.76%	12.16%
W-H Gap	-11.51%	-7.25%	-5.87%	-7.30%	-4.66%	-0.21%	-4.05%	0.81%	5.40%	4.43%	7.54%	6.64%

Gaps in the Percentage of Tests Taken Receiving a "5" on the AP Exam by Subgroup Weighted by Enrollment*									
	1999	2000	2001	2002	2003	2004	2005	2006	2007
Male	4.33%	4.65%	4.70%	5.15%	5.50%	5.76%	5.73%	6.39%	6.67%
Female	4.63%	5.15%	5.11%	5.47%	5.92%	6.19%	5.73%	6.23%	6.63%
White	3.84%	4.39%	4.51%	5.23%	5.37%	6.05%	6.29%	6.60%	7.48%
Black	0.38%	0.45%	0.44%	0.54%	0.49%	0.60%	0.54%	0.69%	0.67%
Hispanic	3.05%	3.78%	3.55%	3.12%	4.06%	3.36%	2.22%	2.54%	2.16%
M-F Gap	-0.30%	-0.50%	-0.41%	-0.32%	-0.42%	-0.43%	0.01%	0.16%	0.04%
W-B Gap	3.47%	3.94%	4.07%	4.68%	4.88%	5.45%	5.76%	5.91%	6.81%
W-H Gap	0.80%	0.61%	0.96%	2.10%	1.31%	2.69%	4.07%	4.06%	5.32%

Gaps in the Number of Tests Taken Weighted by Subgroup Enrollment*



*The unit of analysis for AP data is the test, not the student. AP test results are presented as the number of scores received by members of each subgroup, NOT the number of students who received a given score on any exam. These numbers are not equivalent because some students take multiple tests.