

Arkansas

NAEP proficiency level and percentile data as well as results from most state assessments demonstrate the existence of substantial Excellence Gaps for African-American, Hispanic, and Free and Reduced Lunch Eligible students. White students had higher average AP scores than African-American students on AP tests and were more likely to make a “5” on an AP exam or take an AP exam, while Hispanic students’ performances were more competitive.

According to NAEP proficiency data, the percentage of students at the advanced level increased in Math among white and non-FARM students in both grades and African-American students in Grade 8. In Reading, FARM and white students’ performance deteriorated in both grades. Hispanic students’ performances declined in both subjects in Grade 8. The Excellence Gap expanded in Math, but declined for African-American students in Reading and for Hispanic students in Reading Grade 4. The achievement gap widened for FARM students in both Reading grades and for Hispanic students in Grade 8.

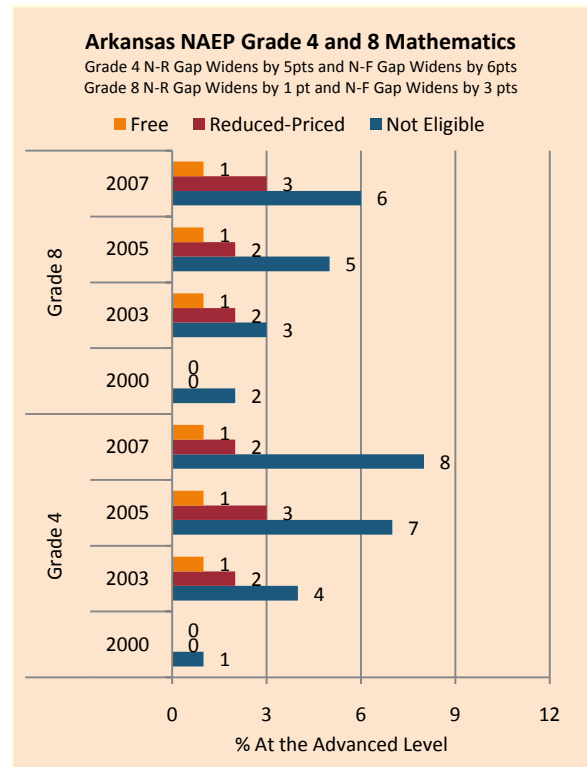
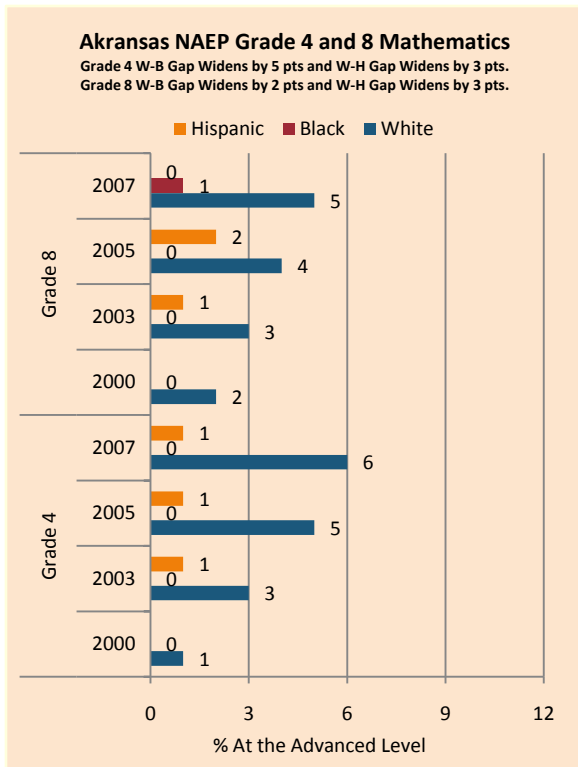
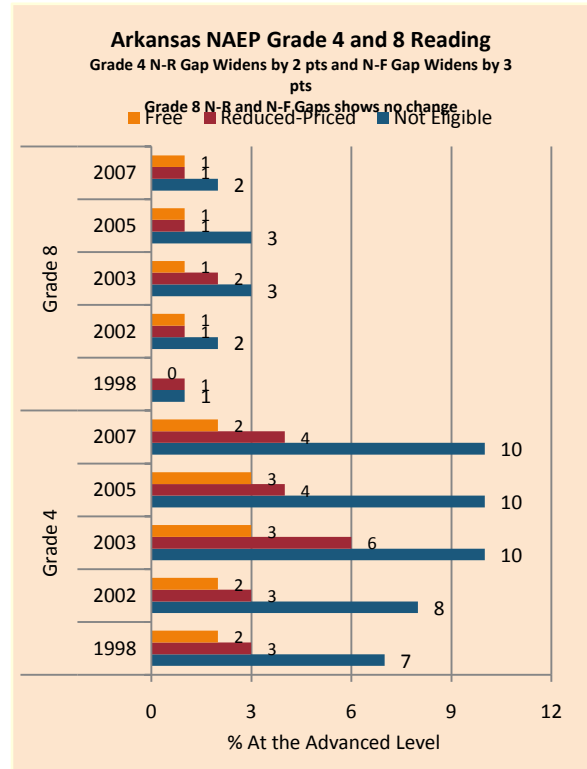
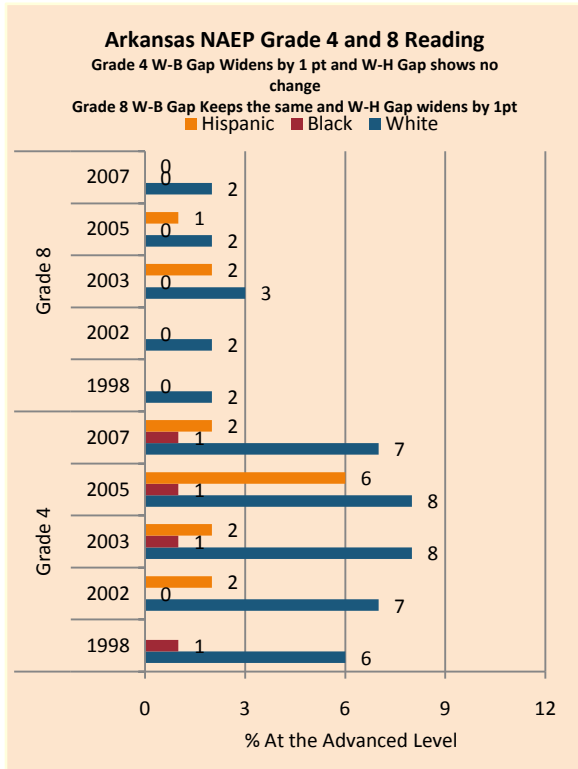
NAEP scale scores at the 90th percentile increased in Math, with substantial progress for African-American students resulting in a narrowing of the Excellence Gap while FARM and Hispanic students lagged. FARM and white students’ performance in Reading declined, as well as African-American students in Grade 4 and Hispanics in Grade 7.

The gap in the percentage of African-American, Hispanic, and low-income students scoring at the advanced level of performance has expanded steadily in Grade 4 and 7 in both Reading and Math. While performance has generally improved over time (with the exception of Hispanic students in Grade 4 Math), in earlier grades white and more affluent students have outpaced their peers.

On AP exams, there was a decrease in the gap between white and African-American students for the percentage of tests which received a 5. There was also a decrease in the gap between white and Hispanic students in the percentage of tests taken which received a 5 weighted by enrollment. Achievement gaps also expanded as measured by the number of tests taken weighted by enrollment.

Summary of State Policy as of 2006-2007

State	Mandate Identify	Mandate Services	Gifted Identified	Identified by Gender	Identified by Ethnicity	GT Funding	GT Funding per Identified
Arkansas	yes	yes	42,600	no	no	\$2,565,585	\$60.23



NAEP Scores at the 90 th Percentile				
Subject, Grade, Group	2003	2007	2003 Gap	2007 Gap
Math 4 Male	266	273	1	2
Math 4 Female	265	271		
Math 8 Male	313	321	3	5
Math 8 Female	310	316		
Reading 4 Male	257	257	5	6
Reading 4 Female	262	262		
Reading 8 Male	296	294	8	8
Reading 8 Female	304	302		
Math 4 ELL	255	256	10	17
Math 4 NonELL	266	273		
Math 8 ELL		282		37
Math 8 NonELL	311	318		
Reading 4 ELL	245	232	16	28
Reading 4 NonELL	261	260		
Reading 8 ELL		273		26
Reading 8 NonELL	301	299		
Math 4 FARM	258	262	13	17
Math 4 NonFARM	271	279		
Math 8 FARM	303	307	14	18
Math 8 NonFARM	317	325		
Reading 4 FARM	252	247	16	20
Reading 4 NonFARM	267	268		
Reading 8 FARM	295	289	10	16
Reading 8 NonFARM	304	305		
Math 4 White	269	276		
Math 4 Black	239	252	29	24
Math 4 Hispanic	256	262	13	14
Math 8 White	316	322		
Math 8 Black	283	297	33	25
Math 8 Hispanic	293	295	23	27
Reading 4 White	265	264		
Reading 4 Black	238	236	27	28
Reading 4 Hispanic	246	246	18	17
Reading 8 White	305	303		
Reading 8 Black	275	276	30	26
Reading 8 Hispanic	296	289	9	14

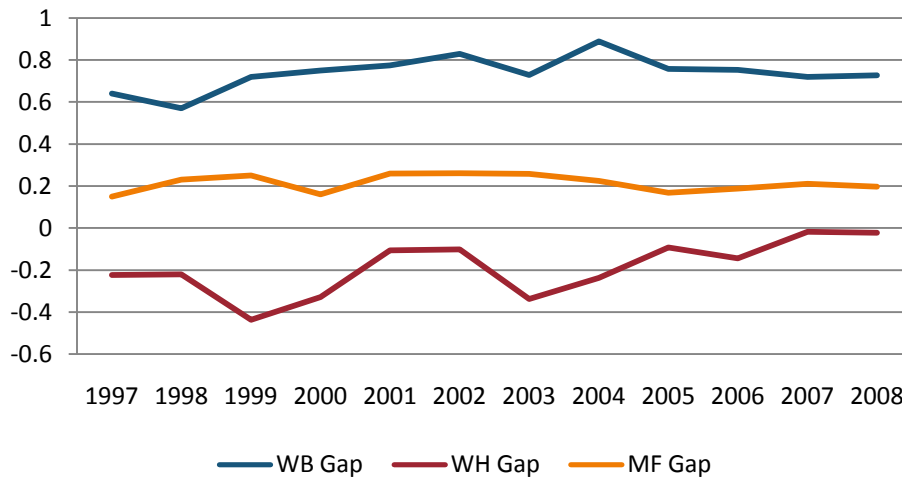
AR Benchmark Exams Grade 4, 7 and End-of-Course Exam Grade 11 Literacy Excellence Achievement Gaps on Race															
% At or Above Advanced Level	Grade 4					Grade 7					Grade 11				
	W	B	H	W-B	W-H	W	B	H	W-B	W-H	W	B	H	W-B	W-H
2004	13	3	16	10	-3	Not Available in 2004					2.2	0.18	0.64	2.02	1.56
2005	18	5.2	9.5	12.8	8.5	15	3.8	8.6	11.2	6.4	2.4	1.1	4.4	1.3	-2
2006	30.2	9	23.1	21.2	7.1	19	5.2	10	13.8	9	1.4	1.2	4.6	0.2	-3.2
2007	27.4	8.4	10.4	19	17	22.8	6.4	9.7	16.4	13.1	3	1.9	1.5	1.1	1.5
2008	35.3	14.4	17.2	20.9	18.1	25.9	7	13	18.9	12.9	2.9	1.8	1	1.1	1.9

AR Benchmark Exams Grade 4, 7 Mathematics Excellence Achievement Gaps on Race															
% At or Above Advanced Level	Grade 4					Grade 7					Grade 11				
	W	B	H	W-B	W-H	W	B	H	W-B	W-H	W	B	H	W-B	W-H
2004	53	20	42	33	11	Not Available in 2004									
2005	22	6.3	13	15.7	9	16	2.1	7.5	13.9	8.5					
2006	31.3	9.5	30.2	21.8	1.1	19.9	4.3	9.9	15.6	10	Not Available				
2007	44	17	25.5	27	18.5	30.9	8.5	13.9	22.4	17					
2008	53.9	24.7	36.2	29.2	17.7	36.9	10	21.6	26.9	15.3					

AR Benchmark Exams Grade 4, 7 and End-of-Course Exam Grade 11 Literacy Excellence Achievement Gaps on SES									
% At or Above Advanced Level	Grade 4			Grade 7			Grade 11		
	N	P	Gap	N	P	Gap	N	P	Gap
2006	38.4	15	23.4	22.8	8	14.8	1.7	2	-0.3
2007	34.2	12.8	21.4	27.2	10	17.2	3.7	2	1.7
2008	42	20	22	33.7	10.8	22.9	3.4	2	1.2

AR Benchmark Exams Grade 4, 7 Mathematics Excellence Achievement Gaps on SES									
% At or Above Advanced Level	Grade 4			Grade 7			Grade 10		
	N	P	Gap	N	P	Gap	N	P	Gap
2006	38.2	18.8	19.4	24.4	8	16.4			
2007	51.9	25.8	26.1	37.3	14.8	22.5	Not available		
2008	62.3	34.8	27.5	44.4	18	26.4			

Gaps in the Mean AP Scores



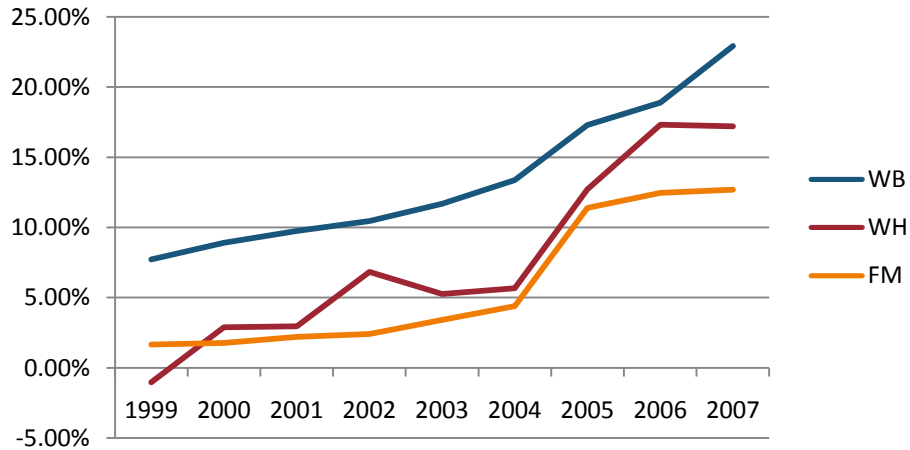
Gaps in the Percentage of Tests Taken Receiving a "5" on the AP Exam by Subgroup*

	1997	1998	1999	2000	2001	2002	2003	2004	2005	2006	2007	2008
Male	8.32%	10.06%	10.47%	10.02%	9.59%	10.07%	8.17%	8.15%	3.96%	5.03%	5.11%	5.17%
Female	5.88%	4.97%	6.48%	6.40%	5.29%	5.28%	4.10%	4.61%	2.59%	2.76%	2.76%	2.76%
White	7.24%	7.12%	7.96%	8.09%	7.14%	7.43%	5.76%	6.06%	3.37%	3.88%	3.74%	3.77%
Black	0.00%	2.48%	0.96%	0.70%	1.12%	0.89%	1.49%	0.45%	0.20%	0.48%	0.38%	0.37%
Hispanic	9.62%	14.86%	21.57%	19.39%	13.39%	10.34%	11.56%	11.84%	6.05%	6.91%	5.26%	5.54%
M-F Gap	2.44%	5.09%	3.99%	3.62%	4.30%	4.79%	4.08%	3.54%	1.37%	2.27%	2.36%	2.41%
W-B Gap	7.24%	4.64%	7.00%	7.39%	6.01%	6.53%	4.27%	5.60%	3.17%	3.40%	3.36%	3.40%
W-H Gap	-2.37%	-7.74%	-13.61%	-11.30%	-6.25%	-2.92%	-5.80%	-5.79%	-2.68%	-3.03%	-1.53%	-1.77%

Gaps in the Percentage of Tests Taken Receiving a "5" on the AP Exam by Subgroup Weighted by Enrollment*

	1999	2000	2001	2002	2003	2004	2005	2006	2007
Male	0.79%	0.87%	0.95%	1.13%	1.01%	1.33%	1.29%	1.78%	1.86%
Female	0.60%	0.67%	0.64%	0.72%	0.65%	0.96%	1.14%	1.32%	1.35%
White	0.74%	0.89%	0.89%	1.02%	0.91%	1.23%	1.35%	1.70%	1.72%
Black	0.01%	0.01%	0.03%	0.03%	0.06%	0.03%	0.05%	0.12%	0.09%
Hispanic	2.22%	1.57%	1.27%	0.72%	1.22%	1.72%	1.65%	1.83%	1.51%
M-F Gap	0.20%	0.20%	0.31%	0.41%	0.37%	0.38%	0.15%	0.46%	0.51%
W-B Gap	0.73%	0.88%	0.86%	0.99%	0.85%	1.19%	1.30%	1.58%	1.63%
W-H Gap	-1.48%	-0.68%	-0.38%	0.31%	-0.31%	-0.50%	-0.30%	-0.13%	0.20%

Gaps in the Number of Tests Taken Weighted by Subgroup Enrollment*



*The unit of analysis for AP data is the test, not the student. AP test results are presented as the number of scores received by members of each subgroup, NOT the number of students who received a given score on any exam. These numbers are not equivalent because some students take multiple tests.