

Alabama

NAEP proficiency level and percentile data as well as results from state assessments demonstrate the existence of substantial Excellence Gaps for African-American, Hispanic, and Free and Reduced Lunch Eligible students. White students had higher average AP scores than African-American students on AP tests and were more likely to make a “5” on an AP exam or take an AP exam. Alabama state assessments have a much lower threshold for achieving excellence than most other states or the NAEP.

According to NAEP proficiency data, the proportion of advanced students increased in Math (both grades) and Reading Grade 4 for non-FARM and white students, with an accompanying expansion of the Excellence Gap. African-Americans and FARM students improved in Math Grade 4, but FARM students’ performance declined in Math Grade 8. Reading Grade 8 scores were unchanged.

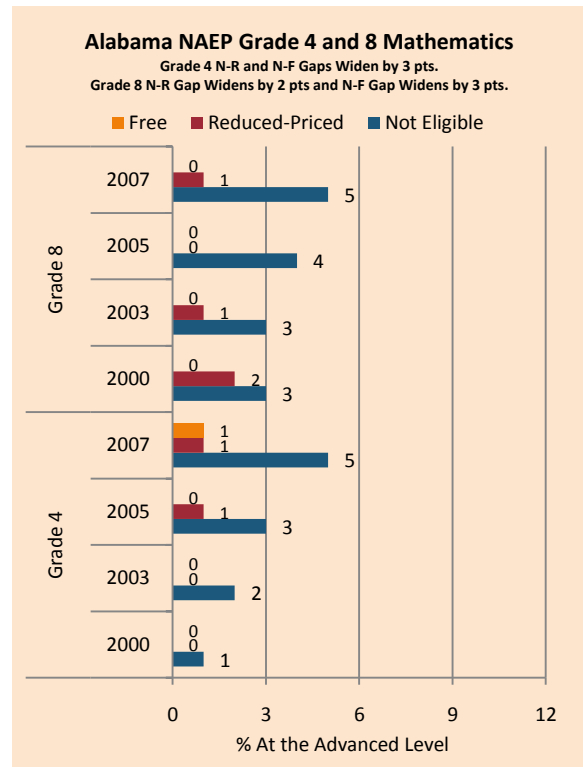
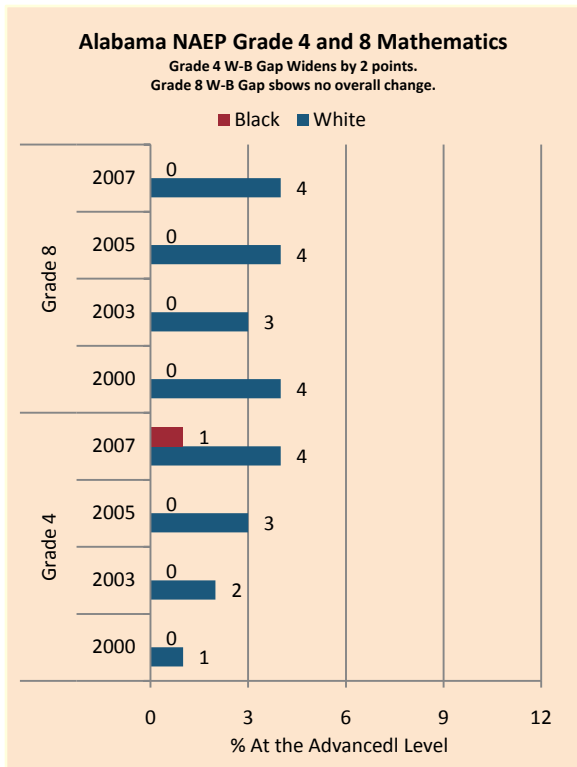
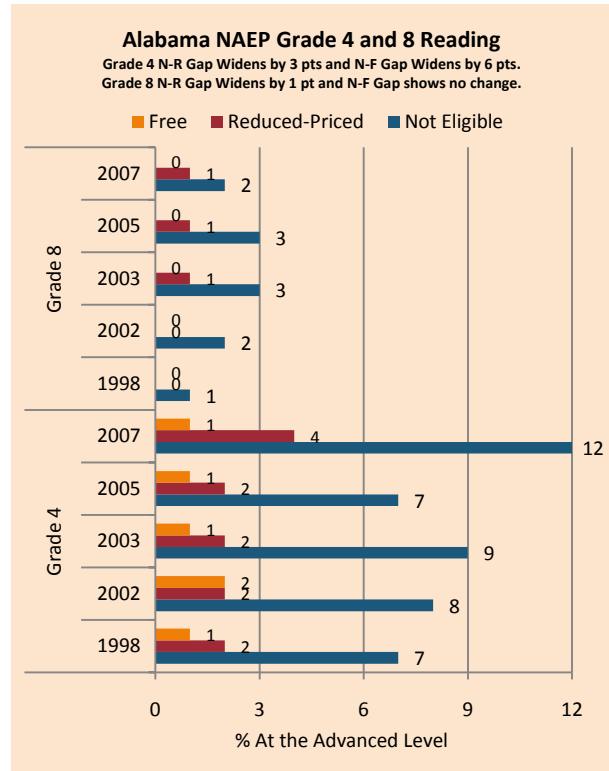
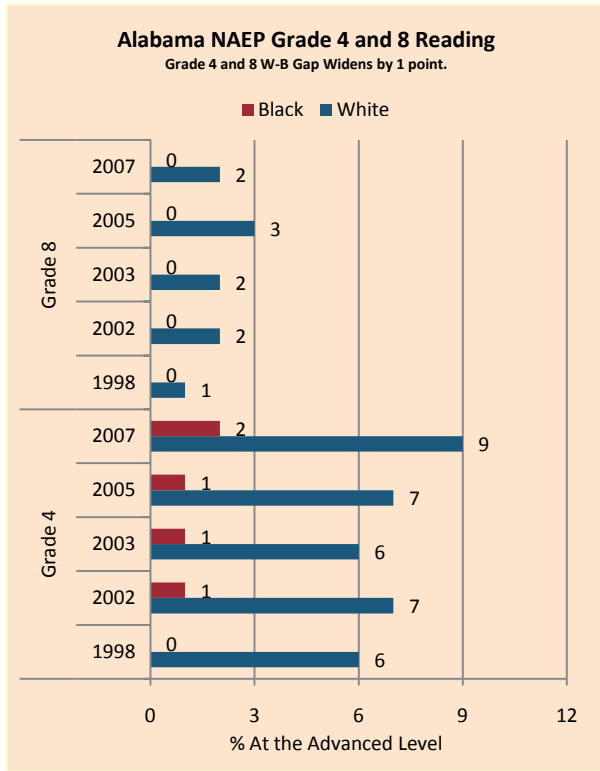
NAEP scale scores at the 90th percentile increased in both grades of Math and Reading Grade 4 except for FARM students in Math Grade 8. In Reading Grade 8 scores declined for all but FARM students. The achievement gap increased in Grade 8 Math, while African-American students improved more rapidly than white students in Grade 4. The narrowing of the Excellence Gap in Reading Grade 8 was largely due to declines among white and non-FARM students.

The proportion of students scoring at the advanced level on state assessments generally increased in Grade 4 and 7 across subgroups and subjects, as well in Grade 11 Math, but scores declined for all except Hispanic students in Grade 11 Reading. The Excellence Gap declined in Grade 11 (both subjects) and Grade 4 Math but widened in Grade 7 Math and for all but African-American students in Grade 7 Reading.

On AP tests, there was a decline in the gap between white and Hispanic students for the percentage of tests taken getting a 5; an increase in the gap between white and African-American students weighted by enrollment; and an increase in the gap between white and African-American students and decrease in the gap between white and Hispanic students in the number of tests taken weighted by enrollment.

Summary of State Policy

State	Mandate Identify	Mandate Services	Gifted Identified 06-07	Identified by Gender	Identified by Ethnicity	GT Funding 2006-07	GT Funding per Identified
Alabama	yes	yes	32,390	no	no	\$2,300,000	\$71.01



NAEP Scores at the 90 th Percentile				
Subject, Grade, Group	2003	2007	2003 Gap	2007 Gap
Math 4 Male	260	267	2	3
Math 4 Female	258	264		
Math 8 Male	311	315	7	7
Math 8 Female	304	308		
Reading 4 Male	254	260	2	2
Reading 4 Female	256	262		
Reading 8 Male	290	292	13	8
Reading 8 Female	303	300		
Math 4 ELL		251		15
Math 4 NonELL	259	265		
Math 8 ELL				
Math 8 NonELL	307	312		
Reading 4 ELL		246		15
Reading 4 NonELL	255	261		
Reading 8 ELL				
Reading 8 NonELL	297	296		
Math 4 FARM	246	253	21	21
Math 4 NonFARM	267	274		
Math 8 FARM	292	290	23	31
Math 8 NonFARM	316	321		
Reading 4 FARM	240	246	26	26
Reading 4 NonFARM	266	272		
Reading 8 FARM	283	283	22	20
Reading 8 NonFARM	305	303		
Math 4 White	264	270		
Math 4 Black	240	248	25	22
Math 4 Hispanic		256		14
Math 8 White	314	319		
Math 8 Black	282	286	32	33
Math 8 Hispanic		284		35
Reading 4 White	261	267		
Reading 4 Black	236	243	25	24
Reading 4 Hispanic		247		20
Reading 8 White	303	301		
Reading 8 Black	279	278	24	23
Reading 8 Hispanic		292		9

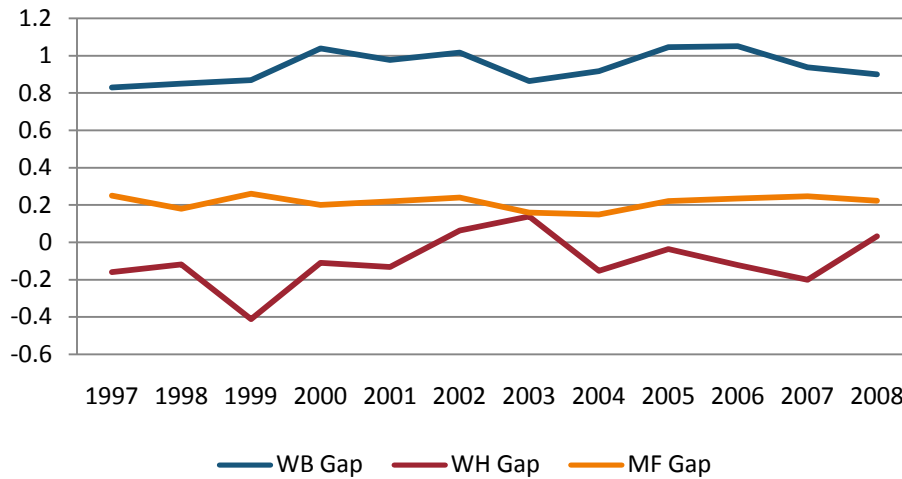
AL ARMT Grade 4, 7 and High School Graduation Exam Reading Excellence Achievement Gaps on Race															
% At or Above Advanced Level	Grade 4					Grade 7					Grade 11				
	W	B	H	W-B	W-H	W	B	H	W-B	W-H	W	B	H	W-B	W-H
2004	47.56	18.83	21.60	28.73	25.96	Not Available in 2004					28.18	7.78	11.38	20.40	16.80
2005	61.65	32.01	32.79	29.64	28.86	51.32	22.87	28.90	28.45	22.42	28.69	8.00	14.29	20.69	14.40
2006	63.50	34.43	33.01	29.07	30.49	51.68	23.76	25.23	27.92	26.45	27.77	7.93	12.95	19.84	14.82
2007	64.34	34.96	36.39	29.38	27.95	55.00	25.84	32.34	29.16	22.66	22.58	5.78	9.53	16.80	13.05
2008	63.56	34.86	36.14	28.7	27.42	54.66	35.93	29.56	18.73	25.1	24.04	6.4	12.92	17.64	11.12

AL ARMT Grade 4, 7 and High School Graduation Exam Mathematics Excellence Achievement Gaps on Race															
% At or Above Advanced Level	Grade 4					Grade 7					Grade 11				
	W	B	H	W-B	W-H	W	B	H	W-B	W-H	W	B	H	W-B	W-H
2004	54.23	25.76	30.82	28.47	23.41	Not Available in 2004					24.82	6.96	15.96	17.86	8.86
2005	52.74	28.76	28.54	23.98	24.20	26.57	8.58	14.63	17.99	11.94	24.91	7.48	15.77	17.43	9.14
2006	58.81	35.79	35.81	23.02	23.00	29.76	10.98	13.95	18.78	15.81	23.67	8.03	15.64	15.64	8.03
2007	57.90	32.20	34.88	25.70	23.02	30.69	12.20	17.62	18.49	13.07	25.23	8.33	16.31	16.90	8.92
2008	58.29	35.91	38.14	22.38	20.15	33.53	13.57	18.16	19.96	15.37	25.35	8.71	17.86	16.64	7.49

AL ARMT Grade 4, 7 and High School Graduation Exam Reading Excellence Achievement Gaps on SES									
% At or Above Advanced Level	Grade 4			Grade 7			Grade 11		
	N	P	Gap	N	P	Gap	N	P	Gap
2004	53.50	22.78	30.72	Not Available in 2004			27.40	8.45	18.95
2005	37.75	36.21	31.54	57.09	25.96	31.13	28.49	8.94	19.55
2006	69.47	38.26	31.21	57.15	26.47	30.68	27.69	9.18	18.51
2007	70.31	39.20	31.11	61.30	28.72	32.58	22.44	7.01	15.43
2008	69.92	38.78	31.14	60.72	27.77	32.95	24.33	7.62	16.71

AL ARMT Grade 4, 7 and High School Graduation Exam Mathematics Excellence Achievement Gaps on SES									
% At or Above Advanced Level	Grade 4			Grade 7			Grade 11		
	N	P	Gap	N	P	Gap	N	P	Gap
2004	59.82	30.16	29.66	Not Available in 2004			24.51	7.33	17.18
2005	58.72	31.55	27.17	32.11	9.39	22.72	25.08	8.42	16.66
2006	64.53	38.23	26.30	35.16	11.68	23.48	24.23	8.73	15.50
2007	63.39	35.97	27.42	36.22	13.21	23.01	25.19	10.12	15.07
2008	64.34	38.43	25.91	39.2	14.69	24.51	25.97	10.11	15.86

Gaps in Mean AP Scores



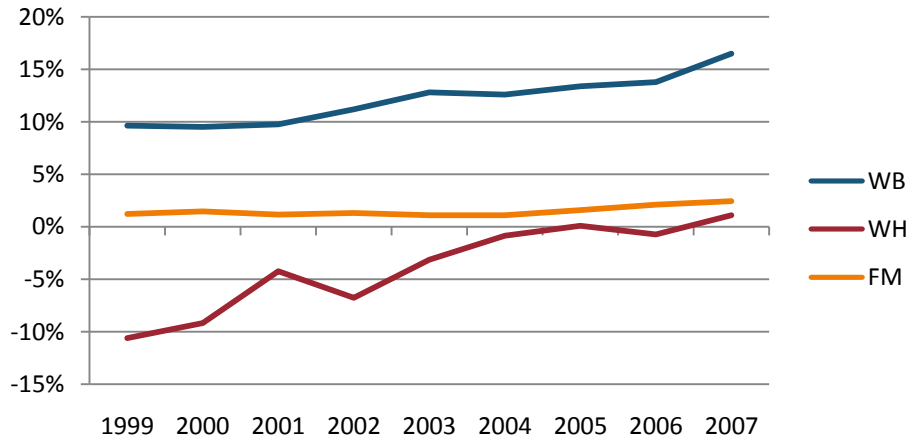
Gaps in the Percentage of Tests Taken Receiving a "5" on the AP Exam by Subgroup*

	1997	1998	1999	2000	2001	2002	2003	2004	2005	2006	2007	2008
Male	12.42%	11.53%	13.68%	0.15%	14.61%	13.82%	12.93%	15.30%	14.58%	15.91%	15.64%	14.03%
Female	8.24%	8.87%	9.87%	10.89%	9.90%	9.72%	9.21%	11.51%	9.77%	10.78%	9.98%	9.80%
White	10.06%	10.23%	11.53%	13.04%	12.05%	11.97%	11.26%	13.10%	12.15%	12.81%	12.41%	11.68%
Black	1.79%	1.66%	2.97%	3.00%	3.16%	3.33%	3.32%	3.31%	1.97%	2.97%	3.08%	3.52%
Hispanic	18.81%	14.58%	23.93%	14.17%	19.80%	13.33%	8.13%	19.23%	10.66%	13.33%	20.19%	14.73%
M-F Gap	4.18%	2.65%	3.81%	-10.74%	4.71%	4.11%	3.71%	3.78%	4.81%	5.13%	5.67%	4.23%
W-B Gap	8.26%	8.56%	8.56%	10.04%	8.89%	8.64%	7.94%	9.79%	10.19%	9.85%	9.34%	8.16%
W-H Gap	-8.76%	-4.35%	-12.40%	-1.12%	-7.75%	-1.37%	3.14%	-6.13%	1.49%	-0.52%	-7.77%	-3.05%

Gaps in the Percentage of Tests Taken Receiving a "5" on the AP Exam by Subgroup Weighted by Enrollment*

	1999	2000	2001	2002	2003	2004	2005	2006	2007
Male	1.25%	0.01%	1.36%	1.42%	1.45%	1.73%	1.81%	2.04%	2.37%
Female	1.02%	1.11%	1.04%	1.12%	1.13%	1.43%	1.37%	1.61%	1.76%
White	1.39%	1.57%	1.51%	1.67%	1.72%	2.00%	2.03%	2.21%	2.61%
Black	0.07%	0.08%	0.09%	0.09%	0.08%	0.09%	0.06%	0.10%	0.14%
Hispanic	5.42%	3.00%	3.32%	2.77%	1.49%	3.10%	1.77%	2.40%	4.01%
M-F Gap	0.23%	-1.10%	0.32%	0.29%	0.31%	0.30%	0.44%	0.43%	0.62%
W-B Gap	1.32%	1.50%	1.42%	1.58%	1.64%	1.91%	1.96%	2.11%	2.47%
W-H Gap	-4.03%	-1.43%	-1.81%	-1.09%	0.22%	-1.10%	0.26%	-0.19%	-1.41%

Gaps in the Number of Tests Taken Weighted by Subgroup Enrollment*



*The unit of analysis for AP data is the test, not the student. AP test results are presented as the number of scores received by members of each subgroup, NOT the number of students who received a given score on any exam. These numbers are not equivalent because some students take multiple tests.